

# SHADOWRUN

## PARAGEOLOGY



TRUE FIRE

HEPATZON



WERTAMILINE



UKKRU

### CREDITS

**Writing**  
Adam Large

**Art**  
Kat Hardy

**Development**  
Peter M. Andrew, Jr.

**Proofing**  
Patrick Goodman

**Layout & Design**  
Matt Heerd

**Art Director**  
Brent Evans

**Shadowrun Line Developer**  
Jason M. Hardy

© 2012 The Topps Company, Inc. All Rights Reserved.  
Shadowrun and Matrix are registered trademarks  
and/or trademarks of The Topps Company, Inc., in the  
United States and/or other countries. Catalyst Game  
Labs and the Catalyst Game Labs logo are trademarks  
of InMediaRes Productions, LLC.

```

Connecting JackPoint VPN ...
... Matrix Access ID Spoofed.
... Encryption Keys Generated.
... Connected to Onion Routers.
> Login
*****
> Enter Passcode
*****
... Biometric Scan Confirmed.
Connected to <ERROR: NODE UNKNOWN>
"Rock can beat paper when thrown."

```

**JackPoint Stats**

2 users currently active in the network

Latest News  
<Null>

Personal Alerts  
\* Futures of Praseodymium have risen to 300 nuyen in the last 5 minutes. Buy now Y/N?

First Degree  
Two Members are online and in your area.

Your Current Rep Score:  
614 (38% Positive)

Current Time: 23 November 2074,  
0248 hrs

PREFERENCES

FEEDS

TASKS

LINKS

HISTORY

Welcome back to JackPoint, chummer;  
your last connection was severed:  
28 hours, 13 minutes, 45 seconds ago



**Today's Heads Up**

\* It's been about ten years since we've heard from Rockhound, and I got back in touch with him a few months ago. He sent me an interesting post on the influence of magic on earth. You're saying "Duh, that's why it's called the Sixth World, right? It affected everything." No, I'm really talking about what happened to the physical earth itself, like before and after the orichalcum rush. If you don't remember, Rockhound is the parageologist from MIT&T recommended by the late Captain Chaos. He's now one of the leading experts working with the Astral Space Preservation Society.

**Incoming**

- \* Never forget that there's a "C" in UCAS, and nuyen flows through there just fine. [Tag: [Montreal 2074](#)]
- \* There have been too many fuses crackling for too long. The bombs are about to go off. [Tag: [Storm Front](#)]

**Top News Items**

- \* A series of earthquakes shake the Strait of Gibraltar, leading engineers to question the feasibility of Proteus' Aquacology construction in the area. [Link](#)
- \* Ghostwalker sets deadline for treaty negotiations, promising "dire consequences" if an agreement is not reached by then. [Link](#)
- \* Celedyr assures NEEC authorities that the extent of the rumored security breach of NeoNET servers is "quite minor" and that no critical data was stolen. [Link](#)

CHAT    MESSAGES    FILES    POSTS    NEXUS    SEARCH

Active

ComStar Firewall

Active

Jack-in-the-Box Antivirus

Active

SpamWitch Filter

On/Receiving

Commcode

Excellent

Signal

Active

Hidden Mode

Local Map

**PARAGEOLOGY**

Posts/Files tagged with "Parageology":

- \* Mana Lines
- \* Type D (Dragon)
- \* Type L (Ley)
- \* Type S (Song)
- \* Sha and Shen effect

[\[More\]](#)

CONTINUE

ADVANCED SEARCH

SAVE

# PARAGEOLOGY

## Posted by: Rockhound

Like everything else in the Sixth World, the earth experienced all kinds of Awakenings. A simultaneous eruption of volcanoes in 2012 tops the list of big events. On the heels of this event, over the next few years the landscape transformed in Tír Tairngire, Tír na nÓg, and Amazonia. With no rational explanation for these alterations, geologists created the new field of parageology to study the effects of magic on physical terrain. In the beginning, it was mostly the study of mana lines and power sites, and then people discovered volatile elements of earth, air, fire, and water that serve as physical manifestations of the elemental planes. Since the Year of the Comet, there has been a lot of commotion; India's floating mountains, CFS's deep lacuna, Sana'a, and the orichalcum rush as the substance suddenly appeared in natural, mineable deposits, and vanished just as mysteriously. During this time five Awakened minerals manifested, each rarer than gold and found in low concentrations around the globe. These Awakened minerals held strange properties, and unlike orichalcum that vanished, these were still minable after the passing of the Comet. Since I have a lot to present, I shall start with the core area of parageologic studies: mana lines.

- What the hell is he talking about? Floating mountains? I don't remember seeing this on the trids.
- HardExit
- Looks like the media has been holding out on us.
- Dr. Spin
- Depends on which media you view, and if you go beyond what is presented to the masses.
- The Smiling Bandit

## MANA LINES

Heilige Linien, fairy paths, dragon lines, spirit lines, dream paths, ley and energy lines; all are different names for what we have universally defined as mana lines. Mana lines are a flow of concentrated magical energy; a laser in a lit room if you like the technical analogy, or a current in the ocean, if you prefer an analogy from nature. It can be tapped into from both the physical and astral plane for greater power. This is about how much most books on thaumaturgy delve into the subject. I'm a little obsessive on getting details so here's my two nuyen on a few questions I wanted answers for.

A mana line can be as narrow as fifty centimeters to several meters in diameter with a length that varies depending on the connecting "end points" where the magical energies start and end. While a mana line seems small, it generates an influence field, otherwise known as a **domain** or **background count**, for tens of meters around it, depending on the power flow. In most circumstances mana lines rest against the earth and flow along its contours. There are exceptions to all of the rules, so don't blame me if you find one that doesn't match. For example, the Wuxing Skytowers have a set of mana lines leaving the ground

at a sixty-degree angle so that they intersect at the top of each building. A parageologist's tool kit contains dowsing rods and manatropic plant seeds that can be used to measure a mana line's characteristics.

The appearance of mana lines can vary depending on whether the line is aspected toward a type of magic, the astral background, or the state of the physical world it runs through. I've perceived them as shimmering rivers, a solid-colored beam of light (hence the technical analogy), or a subtle path in the astral plane. I've even seen one appear like a black crack running through a city neighborhood.

While all are mana lines, I'm in a controversial camp that believes that there are three subtypes that mainstream arcane schools tend to ignore or gloss over. These subtypes have different origination or properties associated with them. The subtypes are designated L, D, or S for ley, dragon, or song lines.

## TYPE D (DRAGON)

Dragon lines relate to geographical energies. From fault lines and volcanic hotspots to rivers and lakes, dragon lines move along natural terrain connecting fire and water like yin and yang. Type D lines influence and are influenced by changes to the land. Land along positive D lines grow healthier plants and tends to be stable, which means they usually host an abundance of life. Type D lines are very strong and dangerous to manipulate, as they can affect the nature of the land when they move, which can cause earthquakes. Dragon lines are the most dominant type of mana lines on earth.



- That's probably why Ryumyo is in charge of making any adjustments to mana lines in Japan.
- Mihoshi Oni
- It was a terrorist disruption of a mana line that caused the Japanese quake in 2060.
- Plan 9
- Or maybe it was because Japan is on the edge of the ring of fire and earthquakes happen there often.
- Stone
- Believe what you like. I should add that given their effectiveness, it's surprising that mana lines weren't used in the Azt-Am war.
- Plan 9
- I don't think either side of the Azt-Am war wanted to start messing with that sort of thing. Who knows what trouble that would lead to?
- Glasswalker
- Right. Because Aztlan is exactly the type of nation to shy away from potentially dangerous magic.
- Marcos

## TYPE L (LEY)

Though the term “ley” was coined about a century and a half ago to define archaic tracks connecting man-made features, we continue to use the term with a slightly different definition. Ley lines are mana lines that connect man-made and fey sites—supposed non-human constructed locations, some of which have religious or emotional significance that generate power. L lines influence and are influenced by civilization. People who live close to an uninfluenced type L line are generally healthier. Those that live directly in an uninfluenced L line tend to feel more energized and inspired. This comes back to the feng shui effect a positive mana line can have.



- The reason you don't see such positive effects often in this dystopian world is because corporations killed the positive energy with the depletion of resources, pollution of the land and air, and their systematic crushing of the creative soul of the common wageslave.
- Ecotope
- How did cairns stay powerful? Yes you had a neodruidic movement at Stonehenge, but once it was tapped, wouldn't it drain away?
- Arete

## TYPE S (SONG)

Song lines are mana lines that are most indicative to the Australian continent. They are different to type L or D as they may or may not have any influence over the land or people. Instead they are designed for travel and navigation both physically and astrally. S lines form astral rifts and can connect to astral gates. They are unnatural lines channeling mana energy, and they don't handle mana fluxes well. Chaotic mana storms are generated along Song lines.



- To me it's all ley lines. In Europe, everything is just classified as ley lines, not type D lines here or a type L lines there.
- Ethernaut
- And I doubt that Wuxing will change their Dragon line procedures whether it's their headquarters in Hong Kong or some branch in France.
- Lyran
- True, but what he speaks of should not be ignored just because of Western or Eastern cultural classifications.
- Arete

## SHA AND SHEN EFFECT

Mana flows along mana lines like rivers when there is a balanced harmony of positive and negative energies. Mana lines are able to handle some imbalance by distributing such energies along the length of the line. When the balance tips too far into negative energy, the mana line becomes blocked with what is defined as the sha effect. The toxic energy then influences the world at that point until balance is

restored. The sha effect is stationary but can expand in a cascade effect, unbalancing other mana lines connected to it. The sha effect disrupts mana flow causing mana ebbs.

In the opposite imbalance, a shen effect is similar to a localized mana surge in a mana line. Such an effect can occur when there is an uncontrolled or unnatural convergence of multiple mana lines.

- It appears a good guideline is “Don't cross the streams” if you don't know what you're doing.
- Milka

## THE ANTHROPOCENE AGE

### Posted by: Ecotope

One of the biggest geological features created in the age of man has been landfills. Large swaths of land have been filled with a dense mixture of waste and trash. Over two centuries of this wasteful practice have created huge artificial layers of land, with some places over a kilometer thick. While the surface may look like a golf course green or some nice little urban community, but below things decay and chemically mix into a possible time bomb, as gasses such as carbon monoxide, radon, and methane escape from lawns and basements, or liquids that are just as dangerous and corrosive leech into drinking water (not that anyone drinks from their faucets).

As humanity entered the Sixth World, with its growth in human misery and its large class of people who barely have access to basic necessities, there rose a new profession and way of life. They are called recicladores, waste-pickers, mole people, and eco-miners. They are part anthropologist, part geologist, and part chemist. The recicladores excavate rooms and tunnels into the landfills for resources like metals from old electronics, methane from decomposing organics, and other recyclable materials. They trade such goods to various organizations and black markets for necessities such as clean water and medicine. Communities of them live above and within the landfills recycling the materials as part of their survival and livelihood. The downside to being a reciclador is the constant exposure to a toxic cocktail of chemicals, diseases, even radiation from the material within the landfill. Life can be short and miserable as a reciclador. The upside is sometime you get to eat without having to kill someone. Not much, but as we all know people often take what they can get.

Corporations don't get into this, as the profit margin is too low for the headaches. When they created the landfills, they didn't think ahead; they just strip-mined the resources out of the ground, then sold the space for cities or corporations to dump waste. However, municipalities have collaborated with recicladores for the power that can be generated from the methane gas, which allows them to buy at least some power from something besides corporations. The corporations are about as thrilled about this as they are about any loss of revenue, which means that runs against recicladore operations are sometimes available.

The next largest man-made feature is the proliferation of plascrete construction. With the higher expense of material like asphalt and tar, construction companies threw more money into their R&D on design alternatives. What they came up with are long fibrous chemical chains that can be added to concrete aggregate to form plascrete. Plascrete, which has the advantage of being moldable and more durable than concrete with rebar, was prolifically used for construction of freeways and new buildings. The construction advantages of plascrete are balanced by its ecological disadvantages. It can resist cracking due to freeze/thaw cycles and invasive plant roots. The surface can be treated to be resistant to water and other chemicals, which would normally be absorbed in traditional concrete. So what we have are huge swaths of urban blight that instead of breaking down over a couple of decades may last as long or longer than ancient Roman construction.

# MAJOR MANA LINES OF THE WORLD

Mana lines cross the face of the earth like a chaotic web. Most are minor or have been broken up by urban sprawls. There are, however, a few that are powerful or have recently gained power. Such locations are what many mage groups look to control. They have classifications of power based on the Metzger-Typhus scale of power in orders of magnitude as well as the type of mana line.

## NORTH AMERICA

### Type L, Class 3: The Great Cahokia Mound Web

Like the stone rings that formed in Great Britain, large earthen domes rose again from previously destroyed Cahokian mounds shortly after the passing of the comet. The nexus of this web is Monks Mound. Prior to the awakening, this mound was thirty meters in height; after the Awakening, it rose to forty meters. Many lines connect as far north as the Great Lakes, as far south as the Gulf of Mexico.

- Several of these locations were already known as power sites and minor, unstable lines. After the comet, it was like someone kicked the magic machine and all the lines and locations popped up and connected together.
- Lyran
- There's a northern group around the Chicago area looking at a possible failed connection because of the blast site. They're seeing if it can be restored.
- Mika

### Type S, Class 3: Chaco Canyon

There are five meter-wide, straight roads that run along the outside edges of the canyon and connect the ruins of Chetro Kettle, Pueblo Bonito at the northern end with the ruins of Una Vina at the other end. The mana line rings the canyon rather than cutting across it. One of the affects of this mana line is an alchera river that runs down the length of the canyon, disappearing into the mists a half kilometer further down from the Chaco Canyon at the ruins of Kin Kletso. Walking within the canyon is dangerous due to the random manifestations of astral gates.

### Type D, Class 2: Harding Icefield

Harding Icefield currently covers five hundred square kilometers of Kenai Mountains in ice. Prior to the Awakening, this was smaller, with over seventy cubic kilometers melting annually contributing to the rising sea levels. By 2010, the fourteen glaciers were reduced to one as they retreated back up the mountain. It wasn't until 2014 that the recorded amount of glacial melt slowed, and by 2060 the icefield was back to its size prior to 1999. It will soon exceed the size recorded during the 1960s. Astrally at several Nunataks or "lonely mountains," there are criss-crossing mana lines that intersect beneath the ice. Along them, the temperature is always twelve degrees Celsius colder than surrounding environs. Since the passage of the comet, a sheng qi effect has been located along all the intersections, introducing an astral shallow. There is a visitor-hiking trail by Exit Glacier, north of Seward, that goes six kilometers into the ice field, but the rest of the icefield is a preserve and is off limits.

- There's also a drop in average temperatures up in the northern latitudes that is having an effect on the mountain snow.
- OrbitalDK

### Type D, Class 3: Niagara Falls

An alchera has manifested similar to Victoria Falls; in this case, a cliff face has manifested. Its appearance refilled as much as ten meters that had been lost to erosion while also displacing a hydroelectric dam. The falls drop fifty meters into Lake Erie. The mana line runs the length of Horseshoe and America Falls, covering an entire kilometer. Another change was the intersection of Niagara Falls and the river at Goat Island. This island was overbuilt as a tourist resort and expanded by ten acres to support new structures, parking, and a helipad. A surge at the nexus in 2058 caused several small tremors that damaged most of the buildings and collapsed the landfilled portion, which the river then took away.

- Goat Island has become a smuggler rest spot for people moving goods both north and south.
- Turbo Bunny
- Manitou Island has some interesting activity as well, with a minor mana line crossing through the heart of the island. Since 2061, it becomes physically visible with fire on the anniversary of the Beaver Wars, which wiped out the native population.
- Mika

### Type D, Class 4: Mississippi River

This four-thousand-kilometer mana line runs down the middle of the great river. Pollution and construction around it have caused sha events, making it difficult to harness the energy. Shamans who connect with this mana line often anchor stone effigies to the bottom of the river or place wooden markers in sand bars to insure their control of part of the river.

### Type D, Class 3: Mount Hood, Rainier, St. Helens

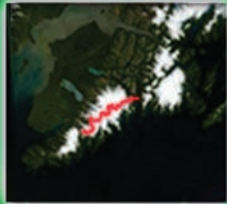
There is a scattering of mana lines that spider web down these mountains following old lava flows. It's similar to the Auvergne volcanoes' mana lines, but less dynamic as none of them are erupting.

### Type D, Class 3: Yellowstone Thermal Line

From the Yellowstone caldera to the Liard Hot Springs, this mana line connects the various hot springs, from the Vichy and Orr Springs in southern Tír Tairngire and northern CFS to the St. Helens and Rainier fumaroles in the Salish-Shidhe Council and Seattle, all the way north into the Athabaskan Council and ending at Liard Hot Springs.

# Major Mana Lines of North America

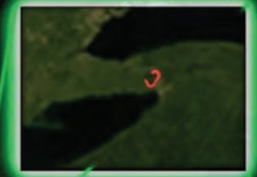
**Harding Ice Field**  
60.0180556°N -149.9861111°W



**Yellowstone Caldera**  
44.6°N 110.5°W



**Niagara Falls**  
43 5.0868°N 79 4.31879°W



**Mount Hood**  
45 19.8057°N 121 42.53549°W  
**Mount Rainier**  
38 56.48915°N 76 57.89981°W  
**Mount St. Helens**  
46.1912000°N 122.1944000°W



**Cahokia Mounds**  
38.65389°N 90.06444°W



**Chaco Canyon**  
36.060293°N -107.967008°W



**Mississippi River**  
29.637376°N -89.932784°W



## Mana Types



**Dragon Line**



**Ley Line**



**Song Line**

## PARAGEOLOGICAL HOTSPOTS: DEEP LACUNA

The Deep Lacuna, which transformed Los Angeles, is a fascinating parageological feature. It blends mana lines, alchera, and geological elements into a complex formation. The San Andreas Fault, part of the greater Ring of Fire mana line, is crosshatched with many minor mana lines. During the twin quakes, a shen effect occurred, transmuting the rock around the minor mana lines into a brittle material the ocean could dissolve. Alternately, if the line was close to the surface, heavier material was allowed to fall through. Combined with tectonic shifts in elevation, southern California's coast became a scattering of islands. Beneath it is a honeycombed maze of tunnels connected by permanent and semi-permanent alchera. UCLA, ASPS, Awakened World Research, and a few other organizations are attempting to map all the tunnels. It's a dangerous maze with the worst threats being toxic critters lurking in submerged tunnels.

- That's no joke. Being hired by the ASPS, I was taking depth readings on some of the blue holes. I'll tell you the

coast looks like the Bahamas with all the Lacuna sink holes, only browner. Anyways, I plumbed one to a depth of three hundred meters with almost vertical sides, two clicks off the east side of Santa Catalina Island. Then I lost the signal as it appeared that the hole was shrinking, with the bottom coming up to us rapidly. Something looking like a big nautilus came out of the hole. Bastard ripped the drone off the cable.

- Sounder

Dr. Rosemont led me to one of ASPS's base camps, where they are working on completing the map of the tunnels. They've named this base camp The 8<sup>th</sup> Gate. The 8<sup>th</sup> Gate, once called Xantusia cave, is located on San Clemente Island. The island is owned by Horizon, which leases the single airport to CFS and the PCC. The rest of the island is an ecological preserve.

Previous archeological digs found the island was inhabited roughly eight thousand years ago and the earliest of the three settlements were culturally different from the mainland inhabitants of the same time period. Since the

twins, the cave system has expanded, becoming connected to the Deep Lacuna. The 8<sup>th</sup> Gate is unique in the fact that it has a fairly dry expanse of tunnels up to the coast. Within this cave system, Dr. Rosemont's team has discovered a few more skeletal remains; it's up to the arcanearcheologists to estimate the age of them based on the location.

- All the dry tunnels have become competitive hotspots. Not just for the artifacts, but the prestige. Accidents and sabotage have occurred more frequently as the groups delve deeper in the Lacuna.
- Dr. Spin
- Once mapped, tunnels also become competitive in the smuggling business. I've heard of, but not confirmed, the "Baja 300," a supposed Deep Lacuna tunnel from Tecate to Temecula. It's wide and mostly straight enough for a bike to traverse, though it's one hundred and twenty meters down to get to it.
- Turbo Bunny

## SOUTH AMERICA

### Type D, Class 5: Amazon River

One of the only known artifacts that was powerful enough to divert a mana line, the Nuestra Senora de Guadalupe, was used on the Amazon River. It diverted the mana lines of the Amazon River and created an artificial nexus. This had a dramatic physical effect on the river; free of its mana line, there were chaotic adjustments of the river's course and flood plains, like it was a kite tail blowing in the wind.

After someone destroyed the basilica in Tenochtitlán and thus the artifact, the mana line returned to its original position. Once the Amazon mana line was back to where it used to be, the river changed course to align itself with the phenomena.

- It goes to show you, don't mess with Mother Nature. Or a man with high explosives.
- Ecotope
- It's rumored that Nuestra Senora de Guadalupe was not destroyed, merely relocated. Various parties would be interested in controlling it; even Aztechnology has motive as they rebuilt a temple to Tonantzin nearby.
- Black Mamba
- The Orinoco River nearby was almost dead from all the gold silt mining. Then there was a series of magical surges, as if it was reasserting itself. The unusual mana storms destroyed the mining ships and flushed them all out to sea. While not as powerful of a mana line as the Amazon River, the magic has influenced the size of the fish there. We're talking one hundred kilos or more fish—beasts the size of orks.
- Glasswalker

### Type D, Class 5: Iguazu (Iguazu) Falls

Iguazu Falls in Amazonia has a unique mana line that runs almost three kilometers perpendicular to the river, along the edge of the basalt cliff where the water falls. Devil's Throat, one of the biggest waterfalls, produces a twenty-five-meter cloud of mist that fluctuates between a dual-natured barrier and an astral shallow.

- It's rumored the dragon Boiuna picked this spot for possible Awakened deposits beneath the falls.
- Ecotope

### Type S, Class 4: Nazca Geoglyphs

The geoglyphs are immense pictograms made by removing rocky stones to expose the lighter-colored surface below. These lines are connected to the astral plane. They burned like fire during the passing of the comet. It has been found that these drawings allow the formation of an astral gateway directly to a particular plane without the need of a spirit guide or travel past the guardian of the planes. Not all of the drawings have been thoroughly researched to ascertain where the astral gateway leads or how to trigger the formation of an astral gate. There have been mishaps with the study of the Nazca lines, leading to the whole area being sectioned off for the safety of the community.

Example drawings were identified to a corresponding metaplane:

**The lizard:** Metaplane of Beasts

**The killer whales:** Metaplane of Water

**The pelican:** Metaplane of Air

- Some can be activated to make a gate to the deep metaplanes. The trapezoid has a four-meter barrier around it, complete with razor wire, to prevent people walking through it.
- Jimmy No
- Or to stop something from leaving.
- Plan 9

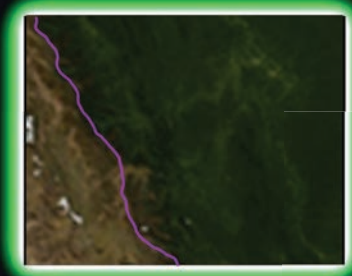
### Type L, Class 2: Qhapaq Ñan

The Qhapaq Ñan is the main Andean Road, backbone of the ancient Incan Empire. It is six thousand kilometers long, and along with other ancient trails connects Machu Picchu and other Incan ruins. It runs in parallel with the flow of magical energy. Some of the trails predate the Incas and were improved upon. Since the beginning of the Sixth World, the Qhapaq Ñan and some of the other twenty



**Teotihuacan Nexus**  
19.6925°N 98.8438°W

**Amazon River**  
3 10.39571°S 59 23.20578°W



**Qhapaq Ñan**  
13 9.78059°S 72 32.7456°W

**Nazca Geoglyphs**  
14.7166667°S 75.1333333°W



**Iguazu Falls**  
25.69528°S 54.43667°W

**Mana Types**

-  **Dragon Line**
-  **Ley Line**
-  **Song Line**

**Major Mana Lines  
of  
South America**



thousand kilometers worth of trails have repaired themselves in the same fashion as Machu Picchu since the '62 quake in the region.

### Type L, Class 3: Teotihuacan Nexus

Teotihuacan consists of the Temple of the Sun, Temple of the Moon, Avenue of the Dead, and the Feathered Serpent Pyramid. Each of the temples and the pyramid are power sites that have mana lines that travel to the Avenue of the Dead and intersect at a point toward the end of the construction in a powerful nexus. Almost twenty years ago, all the teocallis in Central America were connected by a vast network of mana lines. Power running from the great pyramid of Tlachihualtepetl to teocallis in Vera Cruz and Xochincalco combined to create a larger nexus. The network collapsed, however, in less than a year, leaving only the Teotihuacan nexus connected. The rest of the teocalli dropped in power and were reduced to small power sites.

- There was a blood magic structure being powered at the nexus before it was blown to bits. I assume the blast really did a number on the magical network.
- Plan 9

## ASIA

### Type D, Class 4: Ganga (Ganges) River

On the night of January 12, 2012, the Ganga and Yamuna rivers glowed. Some believe it began at the confluence of the Ganga, Yamuna, and Saraswati rivers, which is a sacred site; others believe it began up in the Himalayas since other rivers also became strong mana lines. After the glow ended, the rivers were purified of pollution. In 2061 through 2063, mana surges or shen effects occurred at Allahabad and influenced SURGE in of all those bathing in its waters, making them Nartaki.

- Frequently, confluences of rivers are believed to be sacred in Hinduism. The confluence of the three rivers mentioned is especially sacred, though it should be noted that at present, the Saraswati River exists only on the astral plane. Another sacred confluence is at Kooduthurai, which is a confluence of three rivers: Cauvery, Bhavani, and Amutha Nathi. This spot influenced a SURGE at the Bhavani Sangameshwar temple.
- Winterhawk

### Type L: Class 4: Golden Triangle of Orissa

The Golden Triangle of Orissa are the mana lines connecting the temple complexes in the cities of Bhubaneswar, Puri, and Konark. This encompasses an area with more than two hundred shrines from the temple of Jagannath in Puri, The Sun Temple at Konark, and the sacred lake of Bindusagar in Bhubaneswar. The alignment of the connecting mana lines forms a triangle. From this triangle, twelve mana lines radiate out connecting the four Char Dham, the holiest of pilgrimage sites, as important to Hindus as Mecca is to Muslims, to the twelve holy Shivan Jyotirlinga ("Pillars of Light") shrines. A typical feature of the Orissa Triangle is at each of the Jyotirlinga shrines, the mana line moves straight up into the sky. Researchers have seen the mana lines reach the upper limits of the manosphere, beyond the safe zone of astral projection. Astral shallows and alchera are common within this triangle.

- Popular belief is that there's a thirteenth pillar still buried that will complete the astral construct supported by the other twelve.
- Elijah

## PARAEOLOGICAL HOTSPOTS: FLOATING STONES OF INDIA

Buried for centuries in the jungle, the temple complex of Ram now floats four to six meters above the jungle floor suspended by the magic and mana lines of the Orissa Triangle. While the stones are worn and the walls crumbled, the pieces float where they were positioned centuries or millennia ago, mirroring an astral shadow.

The structure is tethered at some points by the roots of great fig trees, though it is believed that the whole structure can travel along the mana lines. The stones, called spatikam stone, are believed to have trace amounts of elichium (discussed later), which enables their flotation. This also leads to the belief the temple can ascend to the heavens.

- I know what you're thinking. Mana line surfing: Is it possible? From what I know of the Orissa Triangle, given a large enough spatikam stone and powerful mana line, it's probably possible. Practical? No, since most of the powerful mana lines are controlled by powerful people or dragons and stones to ride are rare.
- Elijah

### Type L, Class 3: The Great Wall

Also known as the Long Wall of Ten Thousand Li, this didn't manifest as a mana line until the passing of the comet in 2060. While the wall is approximately 21,100 kilometers long, from Hushan Great Wall in Liaoning to Jiayuguan Pass in Gansu, only eight percent of the wall, the maintained portion, actually shows significant strength. The rest of the wall hovers at just-stronger-than-barely-noticeable levels thanks to multiple sha events. Like Stonehenge, Qhapaq Ñan, and the Cahokia Mound Web, this structure is slowly rebuilding itself. Some gaps have alchera filling in spots. Along the entire length, there are spirit guardians that protect the remaining standing structures.

- It's dangerous to tap into that Ley line. Spirits will come down and defend the wall from anyone trying to control or manipulate it.
- Arete
- Here's a number of ancestor shrines [\[link\]](#) built against the wall, and no one has bothered them. It may be that geomancy for a shrine is close to the "flavor" of the wall, meaning the spirits largely ignore it.
- Winterhawk
- Some of those shrines look way too close together. Someone's offering some fake feng shui. Gotta be bad karma for doing that.
- Elijah

### Type D, Class 2: Indus River

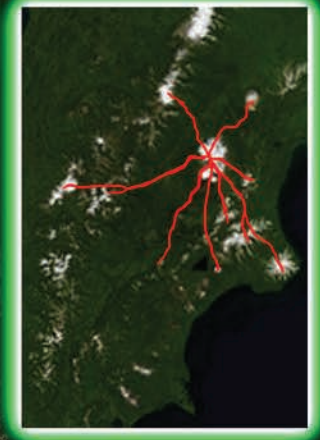
This three-thousand-kilometer river starts in the Himalayas and moves through India and Pakistan before exiting into the Arabian Sea. In 2012, the formation of this mana line within the river purified it of pollution. Dams and irrigation have prevented this river from reaching the power of the Ganges or Jamuna River. It is believed that if the river was in a more natural state, the same SURGE effect of the Ganges and Jamuna could have occurred there.

### Type D, Class 4: Mt. Fuji

There are two mana lines that intersect on Mt. Fuji. One is a short mana line that crosses over the mountain ending at the Aokigahara Forest. The second, longer mana line connects to Mount Tate and Mount Haku.

# Major Mana Lines of Asia

Valley of Geysers  
55.55349545°N 159.9609375°E



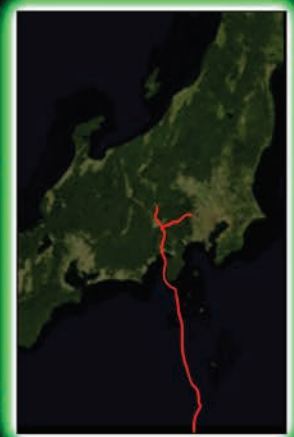
Orissa Triangle  
21.0582737°N 86.49583960°E



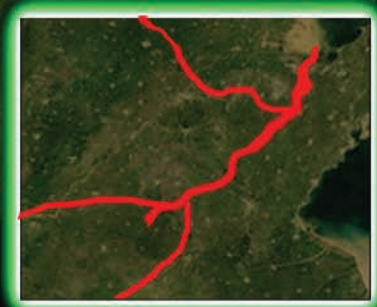
The Long Wall  
37.608529°N 107.894145°E



Ring of Fire  
(circles Pacific Ocean)



Mount Fuji  
35.358°N 138.731°E



T'ai Shan Mountain  
36.255833°N 117.1075°E



Indus River  
28.401363°N 69.374199°E  
Ganges River  
22.0833°N 90.83333°E  
Yamuna River  
26.438056°N 79.21194°E

## Mana Types



Dragon Line



Ley Line



- Aokigahara Forest is a bad place occupied by shades and wild spirits. The mana line ends at the forest because there are strong spiritual forces that use it to their own end.
- Mika

### Type D, Class 7: Pacific Ring of Fire

While not specifically in Asia, this continuous mana line encircles the Pacific Ocean. This is the longest identified mana line, spanning more than forty thousand kilometers. No one has attempted to completely control it, and suspected attempts to manage small portions of it have led to disastrous results. The San Andreas section is of particular interest as it has undergone the most changes since the study of mana lines began. A large percentage of this mana line is now underwater, with some portions disappearing into the Deep Lacuna.

- He's alluding to the Ring of Fire Eruption of 2061. With the multiple Ghost Dances that occurred previously, it's not completely farfetched that someone thought they could manipulate the Ring of Fire. Hell, Ryumyo is known for his mastery of geomancy.
- Plan 9
- Remember that Lung sits on T'ai Shan; he could have played with the mana lines as well.
- Elijah
- Do we really need another scapegoat to blame natural disasters on? I got other things to worry about.
- Hard Exit

### Type D, Class 7: T'ai Shan Mountain

The most powerful mana line beyond the Ring of Fire is the one along the T'ai Shan Mountain. T'ai Shan is located in Shandong province and is one of five sacred mountains of Chinese lore. The mana line follows the 7,200 steps up the mountain ending at the temple of the Jade Emperor, 1,500-plus meters up. Other smaller mana lines intersect the mountain, making the temple of the Jade Emperor a powerful nexus. The Great Dragon Lung lives at the temple, controlling this mana nexus. Geomantic constructed temples along the mountain have aspected the mana lines on the mountain to Wujen.

The other four sacred mountains include **Zhurong Peak**, **Song Shan**, **Hua Shan**, and **Xuanwu Peak**. Xuanwu Peak has a unique nexus, as the magical force from the mountain can force spirits back to their metaplanes.

### Type D, Class 3: Valley of Geysers

The Valley of Geysers is located on Kamchatka Island. This area is densely packed with over three hundred geysers and mud pools connected by a web of mana lines covering over two thousand square kilometers. The native shamans living on the island continue to attempt mastering the mana lines.

- A more recent event has been a two-klick-wide mudslide triggered by heavy rains on the northern side of the valley. This buried several of the geysers in up to ten meters of rock and mud. Unusual seismic activities have occurred ever since.
- Pistons

## PARAEOLOGICAL HOTSPOT: TAKLAMAKAN DESERT

Between the Tien Shan Mountain and the Kunlun Mountains lies the Taklamakan Desert. It is the largest desert in Turkestan. According to popular lore, Taklamakan means "you can get into it but can never get out." Smugglers still travel through it along the old Silk Road. What makes Taklamakan a paraeological hotspot is the discovery of gemstones after the orichalcum rush of '61, which took explorers deep into the desert. These gemstones consist of rubies and sapphires that are unique, like the Naga emeralds, as they contain trace amounts of rare Awakened minerals. A few runners made their fortunes here about the same time Monobe built a mining town in the middle of the desert. It's not an arcology, but an enclosed city nonetheless. Since then, few gemstones have come from the Taklamakan desert. It's rumored that a dragon or some other large fierce creature guards the desert mines.

- No one has heard any communications coming from the Monobe city for at least eight months, and no one has been seen coming or going either. I mean, yes it's a closed system, but if you have five thousand people inhabiting that thing, you should hear something from at least one person.
- Plan 9

### Type D, Class 3: Yamuna (Jamuna) River

This 205-kilometer-long river system is constantly moving as flows change through the flood plain and mana lines naturally split off along tributaries (Tista, Atrai, Dudhkumar, Dharla, etc). It is a holy river, and in 2012 the river was purified of pollution, and a mana surge at the confluence with the Ganges occurred in 2061, causing an unprecedented shen event. Those who were bathing in the river at that time transformed into changelings.

## EUROPE

### Type D, Class 4: Auvergne volcanoes

The Auvergne volcanoes lie in central France. They are four previously extinct volcano chains covering around 120 kilometers from north to south. Each chain has several mana lines projecting from each cinder cone and lava dome creating an intricate pattern of lines and nexi. When the Auvergne volcanoes erupted in 2011, there was a cascade effect including a chain of earthquakes that wrecked Santiago and Galicia in Spain and Lisbon in Portugal. The events continued intermittently for a decade, eventually ending with a volcanic eruption in the Azores. Then in 2061, the volcanoes erupted again, though only astrally with alchera lava flows. The web of mana lines exiting from the Auvergne volcanoes adjusted themselves after the eruption, possibly triggering real quakes and eruptions through a sheng event as the mana lines crossed other mana lines.

- Terrorists strike again!
- Plan 9

### Type L, Class 6: Great Cairn Line

The Tir na nÓg Cairn Line follows an irregular route from Knockne area in County Sligo through Keshcoran and Carnfree to Loughcrew and the huge Newgrange burial complex in County Meath. From Newgrange, the line of power meanders southward to the Motte Stone and the Browne's Hill dolmen. Its power fluctuates with the seasons and astronomical phenomenon, with the peak being as strong as just about any mana spike out there. An interesting fact is that this line even continues underwater; the Great Cairn line moves twenty kilometers out to sea from Clew Bay and ends at a submerged island with eight dolems.

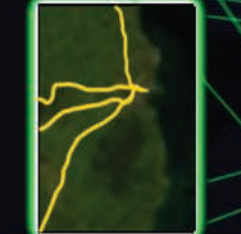
# Major Mana Lines of Europe



**Great Cairn Line**  
 53.80047°N -9.52324°W  
 52.26662°N -6.75006°W



**Temple Ley Line**  
 51.77198°N -10.538614°W  
 55.284756°N -6.221008°W



**Slighe Roads**  
 53.34777°N -6.2579722°W



**Stalker Ley Line**  
 53.2712°N -4.09959°W  
 50.068611°N -5.716111°W



**Stonehenge Ley Line**  
 51.064722°N -1.7975°W  
 50.068611°N -5.716111°W

**Mana Types**

- Dragon Line**
- Ley Line**
- Song Line**



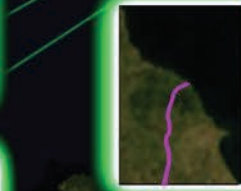
**Scythe (Sickle) Line**  
 58.20150°N -6.74496°W  
 55.294756°N -6.221008°W



**Wild Ley Line**  
 59.097025°N -3.094024°W  
 55.294756°N -6.221008°W



**Auvergne Volcanoes**  
 44.754535°N 4.8284912°E



**Maltese Ley Line**  
 36.073799°N 14.222094°E  
 35.86707°N 14.507617°E



**Portugal Ley Line**  
 38.56534°N -7.921142°W  
 -25.9679222°S 32.5854492°E



**Royal Ley Line**  
 53.146403°N .33788100°E  
 51.48333°N -3.18333°W



- This line is controlled by many organizations; you would risk the ire of one or two of your neighbors if you try to assert your own influence. It's better to bask in someone of your tradition who controls a piece than to wrest ownership.
- Arete

### Type L, Class 3: Maltese Ley Lines

On the islands of Gozo (Ghawdex) and Comino (Kemmuna) in the archipelago of Malta is a set of megalithic temples connected by mana lines. They start or converge at the Ġgantija (Giant's Tower) in Gozo, and a mana line connects Skorba, Mnajdra, and Hagar Qim, while another line connects Ta'Hagra and Tarxien. Each of the temples is between two and four thousand years old.

Another unusual feature is a Type S, Class 1 mana line along the cart ruts of Misrah Ghar il-Kbir and other locations. These ruts are carved into the bedrock. These minor mana lines follow the tracks over a cliff face following an irregular path some two hundred meters out into the air.

### Type L, Class 2: May Ley Line

One of the long mana lines traversing the southern length of England, the May line terminates at Marison and crosses through to the eastern side of the country.

### Type L, Class 3: Portugal Ley Line

This mana line begins near Evora, at the Cromleque dos Almendres, one of Europe's oldest stone circles and ends three miles later at the Anta Grande do Zambujeiro passage mound, the largest of its kind in Europe.

- The Menhir da Meada (standing stone) near Alentejo is an interesting side note. This 7.5-meter-tall stone and several others just stood up on their own in 2012, probably as part of the same event that rebuilt Stonehenge.
- Elijah

### Type L, Class 3: Royal Ley

This mana line begins near Skegness and goes through Charing Cross to St. Edwards Brookwood, through Cardiff before ending at Newquay's Carnewas Longstone. Seven active churches were built upon this ley line along with Buckingham, Fulham, and Oatlands palaces, hence the "Royal" name. This mana line is intersected by the Stalker and Stonehenge ley lines. Both intersections are guarded by the government to restrict magic use at those locations.

- With all the conspiracies surrounding ley lines, it's refreshing that the government is so public about the pair of royal nexi.
- Winterhawk

### Type L, Class 2: Scythe (Sickle) Ley

This mana line connects Callanish through Dunvegan Castle and ends at Rathlin Island. The connecting points on each island are cairns.

### Type S, Class 2: Slighe Roads

The five roads (Slighe Asail, Slighe Midhluachra, Slighe Cualann, Slighe Mhór, Slighe Dala) radiate from Dublin throughout Tír na nÓg. They are the most northern type S mana lines known. While they don't produce mana storms like Australia's, there are some unusual events. Slighe roads can affect the user's perception of distance traveled,

## PARAGEOLOGICAL HOTSPOTS: NEW LAND

The Sixth World has seen an explosion of forests from the Amazon Jungle to the Blackwood. A few geographical features have risen from the ocean depths, including one predicted by the late Dunkelzahn.

**Lyonesse:** Lyonesse emerged on October 31, 2062 from the English Channel and previous sonar studies had revealed eight monolith structures built on it. This is all that was reported about the island before the military secured it.

**FedBoeing Island:** FedBoeing Island rose on Oct 3rd, 2060; it is a small volcanic island barely twenty square kilometers near Petrolia, CFS. With the orichalcum vanishing from the island, it fell in its importance to corporations. Its location within fifty kilometers of Eureka, CFS and the disputed Tír border has made it significant as an outpost for the CFS military. FedBoeing sold the rights to the rock to the CFS in 2067.

**Yonaguni Island Monument:** Just off the coast of Yonaguni Island is a mudstone and sandstone aquatic formation roughly ninety kilometers in size. It is unusual with irregular stone structures, with the main feature being a rectangular structure 150 meters wide and 27 meters tall. Geologists have concluded that the structures on the island are natural, if unusual, formations. Since 2073, the whole area has risen four meters, and at extreme low tide the top of the complex almost breaks the surface. A caveat if you go exploring here: arcanoarcheologists have found ancient carvings slowly manifesting on the formations. They are still trying to decipher the writing and symbolism, but they could be a sign of potentially dangerous magic activity.

**The Haparanda Archipelago:** The Haparanda Archipelago was a small chain of islands north of the Gulf of Bothnia. Since the Awakening, the islands' surface features have changed with the formation of new land bridges, connecting the islands. During and after the Euowars there seemed to be a toxic disruption of the islands' transformation. The center island, Mali, quadrupled in size and is mostly a poisonous marshland due to the influx of Baltic pollution.

**Adam's Bridge:** Adam's Bridge is a stone and coral formation that connected the Indian Union with Sri Lanka. Most of the limestone formations were hauled away in the early twenty-first century to allow big ships to pass through. The first incident with the bridge's return was when the freighter *Tuscan* ran aground crossing through the channel in 2063. The Indian Union Navy went to rescue the vessel, when they were almost stuck as the limestone continued to grow from the bottom of the ocean. It took three weeks for a thirty-five-kilometer long, thirty-meters-tall, and approximately three-kilometer-wide limestone bridge to connect the island to the mainland. It is part of a territorial dispute between the Indian Union and Sri Lanka.

and manifestations of alchera or spirit activity, ghosts and other wild spirits, are frequent along the roads.

- There are some who would say that the daoineann draoidheil, storms characteristic of the Tír, could be related to the Slighe Roads.
- Arete

### Type L, Class 3: Stalker Ley

Connects Beaumeris Castle to the island of Lyonesse and intersects with the Stonehenge mana line.

### Type L, Class 3: Stonehenge Ley

Stonehenge mana line crosses through Stonehenge, of all places. It also crosses through Salisbury Cathedral and Clearbury Ring. Stalker and Stonehenge intersect and end at the island of Lyonesse

### Type L, Class 4: Temple Ley

This line starts at Skellig Michael, runs through Clonmacnoise and ends at Rathlin Island. With the return and restoration of several items in 2072, such as the fairy or horseshoe ball, an undetected sha event was removed, allowing this mana line to function as it bisects the island from north to south. This reappearance triggered a shen event at the intersection of the Great Cairn and Temple lines.

**Type L, Class 3: Wild Ley**

This mana line connects the Shetland Islands on one side of England to Rathlin Island. The Sickle, Wild, and Temple mana lines do not connect to each other on Rathlin. The Veil separates Wild and Sickle from Temple, though the erratic nature of the Veil sometimes allows the three to connect, causing mana surges down all three lines.

**PARAGEOLOGICAL HOTSPOTS: MISSING MANA LINES OF GREECE**

Finding mana lines should be easy for a parageologist skilled in geomancy or geomasonry. But in the Balkans and the Aegean Sea, there is an unusual absence of mana lines and power sites. Astrally, nothing appears out of the ordinary; no mana voids, average pollution, etc. There's also no difficulty in casting spells or other Awakened anomalies that would account for the absence. Yet there are no "rivers of mana" rolling down from the Acropolis or Mount Olympus. Further research is needed to measure the manosphere, but my hypothesis is that the ground around Greece is so parched that even with sixty years of "rain," the ground is still soaking it in.

**MIDDLE EAST**

**Type L, Class 4: Gobekli Tepi Nexus**

The Gobekli Tepi in Kurdistan is a temple with five- and sixteen-ton limestone pillars arranged in multiple concentric rings. The temple is estimated to be a staggering ten thousand years old. Mana lines stretch out to Jericho in Palestine and archeological sites in Nevali Cori, Cayonu, and Catalhoyuk, located in Turkey, East Anatolia, and Kurdistan, respectively. These sites date to the same Neolithic era.

**Type D, Class 3: Nile River**

Like the Mississippi, Amazon, and Zambezi, the Nile also has a mana line flowing along the middle of the river. There are theories that some of the structures around the river were able to control when floods would occur to support agriculture, though to date nothing has shown the river's mana line ability to exert such control.

**Type L, Class 3: Pyramids of Egypt**

The Pyramids of Egypt are believed to be the earliest works of geomasonic architecture, though it is still up for debate which is the first true pyramid. Current theory is that the first pyramids, which include the steppe pyramid of Pharaoh Djoser up to Pharaoh Snefru's "Bent pyramid" in 2600 BC, are energized like the cairns in England and not designed for the purpose of channeling mana energy. Further, the mana-channelling art was not really put into use until Pharaoh Khufu's Great Pyramid in Giza was completed in 2250 BC; the effort ended with the Pyramid of Menkaure, the last geomasonic temple of ancient Egypt.

Others argue that geomasonic structures should include the subsequent Nubian pyramids built some eight hundred years later. In any case, over one hundred pyramids chain themselves together parallel to the Nile River. It is only at Giza and Saqqara that the mana lines branch off from the pyramids and intersect at Heliopolis.

- There are several nexi in Heliopolis from the multiple mana lines coming in from the pyramids. Not all of them are focused at one location, so there are occasional mana surges. There's a theory saying that if the obelisks in Rome,

London, and New York were returned to Heliopolis, all of the mana lines would converge into a single large nexus that would rival the T'ai Shan Mountain.

- Elijah
- It's dangerous to work with spirits close to these mana lines. The necropolises can manifest ghosts and other unwanted spirits.
- Black Mamba
- I can totally see a *Revenge of the Mummy* trid set during a run down there.
- Slamm-O!

**PARAGEOLOGICAL HOTSPOTS: SANA'A**

The Rub'al Khali desert outside Sana'a has become discolored, changing to a shade of blue. It's a fascinating mystery to parageologists. The blue sand vibrates and moves, coalescing and creating patterns that contradict the movement of the wind. The source of the blue sand seems to be the limestone beneath the sand. Parageologists are split on why this blue mineral is leeching its way up through the stone and why it behaves the way it does. One theory is that a subterranean mana spike is changing the stone composition. Another theory is that it's artificial, and some artifact is causing the earth to change.

Parageologists traced the source of the blue sand through chromatic testing of samples sixty-plus kilometers into the desert. Within the center of this source of blue sand were the ruins of an alabaster white city identified by a huge number of broken columns. This was rumored to be the city of Irem. The Atlantean Foundation dropped a team of excavators and arcanearcheologists onto the site within hours of the discovery, excluding all other scientists until they were done. What happened to the team in the week following the discovery is vague, but the whole team was extracted and treated for heat stroke. Atlantean drones still circle the city keeping people away from the site, though a sandstorm has since covered most of the city.

**AFRICA**

**Type D, Class 2: Great Rift Valley**

A mana line runs six thousand kilometers down the middle of a trench in Africa. Small volcanoes and lakes align themselves along the line.

- Great Rift Valley has some of the most fascinatingly primitive free spirits. Well, primitive may be too strong of a word. Primordial might be better; they are an amorphous collection of wind, water, and stone spirits.
- Elijah

**Type L, Class 2: Lalibela Nexus**

In the Ethiopian city of Lalibela, there are thirteen stone churches that were carved out of the earth during the thirteenth century. From each is a crisscrossing matrix of mana lines, the longest only a hundred or so meters. An interesting note of the Lalibela nexus is a faint type S class 1 line that leaves the nexus and travels north along an old pathway for a kilometer. It's hard to follow as it's barely noticeable on the Astral Plane.

# Major Mana Lines of Africa and the Middle East

## Mana Types

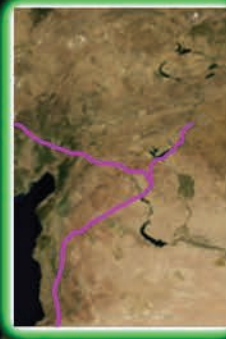


Dragon Line



Ley Line

**Gobekli Teve**  
37.24782°N 38.946533°E



**Pyramid Path**  
30.0120306°N 31.206665°E



**Lalibela Web**  
-9.362352°S 33.134765°E



**Nile River Path**  
31.353636°N 31.10229492°E



**Great Rift Line**  
11.54461646°S 42.604890°E  
-25.9679222°S 32.5854492°E



**Victoria Falls**  
-17.937581°S 25.845336°E



**Mpumalanga Cross**  
-26.02717014°S 30.11352539°E  
-25.6613334°S 30.250854492°E



**Type L, Class 4: Mpumalanga Cross, “Place of the Rising Sun”**

Near Maputo, in South Africa, is a crossing of mana lines connecting stone ruins near Waterval Boven, Machadodorp, and Carolina. At the nexus of these mana lines is what is known as “Adam’s Calendar,” a monolithic structure with a debated age of 75,000 years old.

**Type D, Class 3: Victoria Falls and the Zambezi River nexus**

One mana line follows the Zambezi River from the north and then intersects a two-kilometer line along Victoria Falls. This nexus is similar to the Iguazu Falls in Amazonia, as the one-hundred-meter waterfall and gorge is a natural astral shallow. Even during the dry season, these mana lines produce an alchera of water to keep the falls going, though the water disappears when it leaves the gorge.

**AUSTRALIA**

The Type S lines are a rough approximation based on the aborigine guides’ descriptions, as it’s fairly dangerous travel too close to those lines. While they can tell me where they are, they hold back information on how to safely travel them. Assuming they know.

**Type S, Class 3: Banumbirr Path**

One of the only Type S mana lines to cross water, it starts at the Goulburn Islands in the Northern Territory, runs through Gagudju and Ubirr and finally ends at Uluru. Unique oceanic mana storms come from the Banumbirr mana line, creating rogue waves or whirlpools.

- The uranium mines in Gagudju are still viable if you don’t mind risking the storms.
- Black Mamba

**Type S, Class 3: Native Cat Path**

This mana line starts at Girrawah Park near Canberra and travels north, ending in the middle of the Simpson Desert. The Simpson Desert has expanded due to drought conditions; mana storms manifest as torrential rainstorms, but the water never hits the ground.

- I’ve heard of men drowning in the Australian desert. Traveler beware.
- Traveler Jones

**Type S, Class 3: Rainbow Serpent Path**

The other water-crossing Type S mana line, the Rainbow Serpent starts in Irian Jaya, Disputed New Guinea, and wanders through Ubirr and terminates at Nimbin, where the head of the Rainbow Serpent is said to rest. A small copse of red cedars grows at Nimbin after near extinction due to deforestation. The mana line is marked by rock paintings of the Rainbow Serpent.

- Some storms that occur at Nimbin appear as a thrashing snake. I’m guessing there’s a correlation to the background taint.
- Ecotope

- This site is attracting a variety of visitors, including sincere believers and despoiling tourists. Spirits will not be far behind
- Man-of-Many-Names

**Type S, Class 5: Sydney Path**

The ridges and engravings around the outskirts of Sydney mark the physical boundary of this mana line. Something about the way it is “made” allegedly generates the mana storms.

**Type S, Class 4: Uluru-Kata Tjuta Path**

This mana line connects the domed rock formation of Kata Tjuta to Uluru, twenty-five kilometers to the east.

- Mining operations around Uluru have to go through Tanamyre Resources. They appear to have influence over the Aboriginal owners. That being said, if they are actually mining here, it must be small-scale operations, as I haven’t seen the usual blasting and heavy equipment.
- Ecotope

**Type S, Class 3: Walujapi Path**

Starting at the Burrup Peninsula, the line winds through Karratha and finally connects and moves along the Victoria River Valley to find the river’s source. The limestone ridge is said to be the shed snakeskin of the Walujapi, a black-nosed python. The mana line is connected to the river, even if a small one appears to have been forced out of the river and made into the Walujapi mana line.

**CRUEL OIL**

**Posted by: Ecotope**

As science predicted, easily accessible fossil fuels and petrochemicals ran out by 2050. So how are we hanging on? Two factors came into play that allowed the industrial world to continue using these vital substances. The first is, to put it bluntly, the removal of approximately two billion people from the equation. The second is the improvement of technology to squeeze a little more out of the earth without it running entirely dry.

Companies and nations stockpiled reserves of fossil fuels. Wherever possible, substitutes are used such as biofuels to stretch the reserves as much as possible, though even the biofuels have become very costly to create from corn or algae. Advancements in recyclable bioplastics have helped curb the consumption of petroleum-based plastics. The existing petroleum infrastructure is barely a quarter of its size during the resource rush. That being said, there are still fracking fields in the heart of CAS and China, aquatic drills in the usual places: Gulf of Aztlan, Inuvialult, and the Arabian Caliphate, processing of tar sand in Athabaskan Council territory, and methane ice mines in the Arctic Circle. The extent of these operations is simply not what it used to be.

To save on fueling up vehicles, city infrastructure of freeways and streets has been rebuilt with piezoelectric sensors and rare earth material. The piezoelectric material allows vehicles driving along the road to provide power to GridGuide, while the rare earth magnets are how GridLink recharges cars as they drive along the same road. Combined with solar technology, regenerative braking, and other power technologies, it has kept almost ninety percent of urban commuters from having to use a drop of fuel and saves the city twenty percent on electricity needed to power GridGuide. Of course this increases the demand for an alternate resource, but that’s a different story.



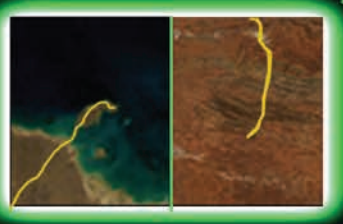


# Major Mana Lines of Australia

**Rainbow Serpent Path**  
-4.7406753°S 139.5703125°E  
-27.4887811°S 152.9296875°E



**Walujapi Path**  
-11.17840187°S 136.7578125°E  
-19.2385498°S 132.802734°E



**Barumbirr Path**  
-16.5098328°S 139.438476°E  
-25.3525939°S 131.0343615°E




**Uluru-Kata Tjuta Path**  
-25.3525939°S 131.0343615°E  
-25.301820°S 130.704345°E



**Native Cat Path**  
-33.4314413°S 149.5678710°E  
-25.453194°S 138.2299804°E



**Sydney Path**  
-33.9433599°S 151.171875°E

**Mana Types**  
 **Song Line**

## AURORA BOREALIS AND AURORA AUSTRALIS

### Type ? Class ?

The Northern and Southern Lights have been noted to have wild expressions of mana storms as they dance in the sky. Some parageologists are leaning towards classifying them as Type L mana lines, though others argue that they are astral phenomenon and not mana lines since they are on the edge of the Gaiasphere. Going with the assumption that they are mana lines, they're huge circular lines that

vary in diameter depending on a variety of factors. It is believed that this phenomenon is having an effect on the weather in the northern and southern poles, with average temperatures dropping up to four degrees and the mana storms causing more intense storms. Adding to the classification debate are unique light columns that occasional descend from the northern and southern lights. They are believed to be a theoretical bridging or grounding of the Aurora to earthly mana lines.

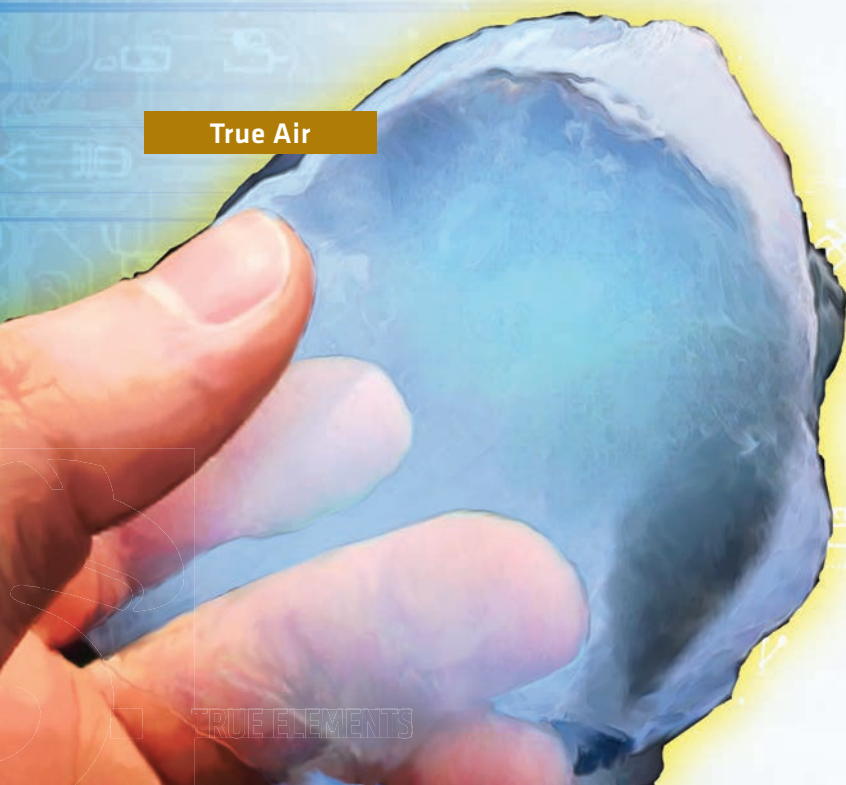
# TRUE ELEMENTS

Since the Awakening there were rumors of weird material found around the world. Without any scientific study they were just called true elements, like the alchemists of old would have used. These weird elements didn't last very long, and in some instances were deadly to metahumans. Because some autopsies showed radiation poisoning, many of the cases were dismissed as mistaken identity for some known radioactive material. It wasn't until 2064 when the first of the true element was found and studied by the magical community, that the existence of true elements was validated. True elements are, in a nutshell, volatile astral materials from metaplanes made manifest on Earth. Only the four elements (Earth, Air, Fire, and Water) from those metaplanes have been confirmed to exist.

## TRUE AIR

True Air or longfeng (dragon wind) is the rarest of the true elements. The only confirmed location is in the chaos of the mana storm around Tibet. There is the possibility of longfeng forming in the high altitudes of mountains where mana levels can fluctuate drastically. Longfeng has the appearance of a smooth-shaped aerogel-like material no bigger than a few cubic centimeters and weighing less than a gram. Longfeng is translucent white in color and exceptionally cold to the touch.

True Air



- I'm no expert, but there are storm jockeys, mages and riggers who track storms in relation to ley lines and nexi. They firmly believe that they can find longfeng and longlei in softball-sized hail when tornadoes or hurricanes connect with mana lines. Crazy buggers! They also say you have to contain them fast before they decompose into natural elements.
- Mika
- It'd have to be a natural storm, otherwise every nexus would be a disaster area.
- Lyran

Alchemists have transformed this substance into a stable gaseous reagent. The exotic reagent, called primal breath, can be used with atomized material in the plating of magical items.

- I've heard of this primal breath using argon in the formula and being put in glass tubes and electrified, possibly as an alternative to a Lucifer lamp.
- Lyran

## TRUE EARTH

True Earth, also known as longpi (dragon skin) can be found in extreme heights or depths of the earth. Apparently the chaos of mana warps can sometimes precipitate longpi at such locations. Nexi on pristine natural earthworks or by some "mystical friction" of a powerful mana line against hard granite stone are also rumored locations where longpi can be found. Longpi are opaque, glossy stones, much like obsidian, found in perfect square or diamond shapes. The color of the stone depends on the surrounding stone it's found in. Longpi are palm-sized stones and warm to the touch.

Tautona and its sister mine, East Rand, in Boksburg, Azania, are noted for not only precious minerals, but for what is to be believed to be a vein of longpi at four kilometers below the earth's surface. DeBeers-Omnitech operates the mines and has not publically stated if they have found longpi.

- Good luck in getting past security. They have full-body scans once you reach the top in case you swallowed company property, and it's not like you can hide coming back up. It's an hour-long elevator ride either direction.
- Hard Exit
- You're better off spoofing the sensors when they haul the ore out for processing. Make the corporation do the dirty work for you, because in the end it still requires human intervention to harvest the True Earth.
- Lyran



True Earth

- Stone Mountain is one of those supposed manifested True Earth sites, but there's an unusual taint or flavor to the reagents if taken from around the bas-relief sculpture of past and present CAS leaders.
- Man-of-Many-Names

When true Earth is used as a catalyst in an alchemistic solution, it precipitates in the formation of crystals. These crystals, called primal stones, can vary in color; they are of clear quality, and are approximately eighteen carats in weight. They are a stable exotic reagent with their own unique properties.

#### PARAGEOLOGY: LIFE ROCK

Dr. Fiona Craig, an arcanoarcheologist who specializes in pre-Awakening magical artifacts, came across an interesting artifact during a dig in Greece. It was a shard of obsidian that she theorized was a piece of a larger stone she found references to called a "morel sael," or morel stone. Unlike most magical artifacts, the item doesn't have a magical aura, but instead appears to have a faint aura similar to that of living being, hence the Sperethiel name for "Life Rock." When compared to primal stones, there are similarities, but the morel stone is a natural formation and of such a large size that it implies that it is not a derivative of longqi.



True Fire

#### TRUE FIRE

True Fire or longqi (dragon breath) is known to manifest at several Dragon-type mana line nexi: Auvergne volcanoes, Yellowstone Caldera, and Tsai Mountain are the most probable places to find it, though it's still not yet predictable as to when they will form at any of these locations. The largest known amount of longqi found is in the Haleakala Crater in the kingdom of Hawai'i, as it's some kind of vortex of mana and natural energies.

Longqi is unusually tangible as a pale flame that can be picked up by tongs provided they can resist the heat. Reagent metals heated/melted by longqi have their material properties altered. An alchemist can use this in the creation of a stable exotic reagent called primal forged.

- Haleakala Crater, another extreme place you don't really want to get true elements from. Not only do you have the kahunas who consider it a spiritual center, you have to deal with Madame Pele, the "spiritual force" who will curse anyone who takes any lava rock from the islands.
- Mihoshi Oni
- Superstitious?
- Lyran
- Experienced.
- Mihoshi Oni

## TRUE WATER

True Water or longlei (Dragon Tears) was the first of the true elements to be found. It was found in 2064 along the bottom of the South China Sea. Longlei are translucent hexagonal crystals, three to four centimeters in diameter. They can easily be mistaken for a diamond or quartz crystal except for the fact they are slippery and have a constant chilly temperature. Above the ocean, the Harding Icefield and both the Arctic and Antarctic circles may rarely form longlei. It is rumored Evo's deep-sea mining expedition for rare earths in the Atlantic have uncovered both longlei and longqi trapped in methane ice. Longlei can be transmuted into a non-Newtonian fluid with an alchemical device similar to a pressure cooker. Once in fluid state, it can be used in the creation of exotic reagents.

- Magic shit trapped in a volatile substance—dangerous combination.
- Clockwork

Forged raw reagent metals, either heated with true Fire or quenched with true Water can become exotic reagents called primal forged. As with the parental elements, these radicals cannot be combined into the same magical creation. The same goes for primal forged metals being heated by true fire and quenched with true water.

- I've always thought of primal forged being the way Excalibur and other artifact weapons were created.
- Lyrax



True Water

# AWAKENED MINERALS

Along with the true elements, there were arcane magical metals alchemists sought to rediscover in some ancient manuscript or cuneiform slab. Sadly while there were tantalizing rumors of fantastical materials, none were actually found, that is not until after the great orichalcum rush. Around late 2062, early '63, certain minerals were found to have unique properties, some definitively magical. It took extra effort, though, to convince corporations to pause some mining efforts to do proper alchemical testing. Awakened minerals lose their "magical quality" when being inspected and broken into individual elements, which I believe has happened at several locations around the world at an immeasurable loss. While the effects of the minerals can be assensed, only one of the minerals I know of could directly be perceived as Awakened, so it took an expert eye and a good set of alchemical tools to dig in the right spot. Here are the five Awakened minerals that were discovered over the course of a five-year study.

- I'm curious how Rockhound knows about these minerals.
- Winterhawk
- Apparently he's been a corporate consultant for almost ten years and financed by MIT&T for his own expeditions for another fifteen. Problem is that he's gotten too knowledgeable, especially in the locations of rare deposits and needed to do a little brain dump, just in case he has an accident or is extracted.
- FastJack

### AETHERPEDIA: WHAT IS A MINERAL? WHAT IS A GEM? WHAT IS A ROCK?

A mineral is a homogeneous, naturally occurring, inorganic solid. Each mineral has a defined chemical composition. Gems are minerals with ornamental value. Most have three common qualities that set them apart from common minerals: beauty, durability, and some degree of rarity. Rocks are an aggregate of minerals.

## ABYSSITINE

Abyssitine is a black, dense mineral with long slender, prismatic crystals. The longest crystals were thirty centimeters long. These crystals are tough and have unusual properties. First is that it absorbs dual-natured light passing through it. Second, abyssitine in the earth creates a region of natural mana ebb. Finally, it can absorb direct and indirect projections of magical energy with a thermal conversion as the magical energy is dispersed into the Gaiosphere.

It's very heavy, with over twice the density of lead, making it impractical to carry large amounts. Corporations basing their income streams on magical applications generally don't have to worry since it's such a rare mineral. The properties of this mineral have been important to many corporations' security arrangements, but it and the other Awakened minerals have not been able to be created through alchemical means like orichalcum.

When abyssitine absorbs magic, it cools down giving it a nickname, “Cold Iron.” Rocks containing small amounts of abyssitine have been found in the Australian Outback and the Trinidad Archipelago of Amazonia. One hypothesis is that abyssitine may not be terrestrial in nature due to the shocked quartz samples retrieved from the same locations. Re-evaluation of existing artifacts has found that the Onyx Unicorn may be made of abyssitine.

- Nice little paperweight to have on your desk in case of fireball. I'll put that next to my potted molu.
- Slamm-O!
- Also a serious luck charm on runs.
- Stone



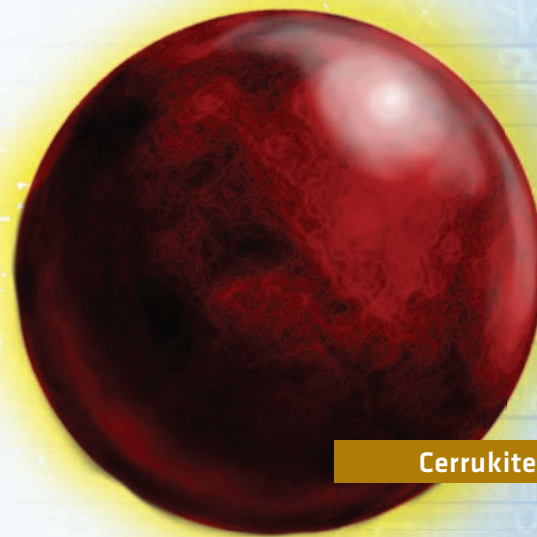
Abyssitine

### CHARACTERISTICS

**Composition:** Unnatural combination of calcium, iron and astitine  
**Color and luster:** Black; streak black  
**Hardness:** 9.5  
**Crystals:** Hexagonal; sometimes tapering prismatic  
**Other data:** Specific gravity 35; cleavage perfect one length  
**Material Properties:** Absorption  
**Location:** Rare pockets in relation to ancient meteorite impacts.  
**Alloys:** Psiloson (abyssitine and cerrokite)  
**Absorption:** The unrefined mineral naturally reduces the ambient mana levels by 2. Spirits in physical contact with abyssitine have their Force temporarily reduced by 1 while in contact. Spells that include abyssitine directly as part of the area of effect also have their Force reduced by 1 through absorption by the mineral.

## CERRUKITE

Cerrukite is an amorphous mineraloid with no defined crystalline structure. It is beautiful with a red-and-black mottled color like smoldering fire. Cerrukite is unique in that it forms almost perfectly spherical deposits, with the largest being ten centimeters in diameter found in the Australian Outback near Uluru. Cerrukite has dual-natured properties that prevent astral entities from passing through it. Stone and earth containing trace amounts of cerrukite are impossible to penetrate astrally. In addition, this mineral in sufficient concentration generates a sort of energy that prevents the astral body from leaving the corporeal body.



Cerrukite

### CHARACTERISTICS

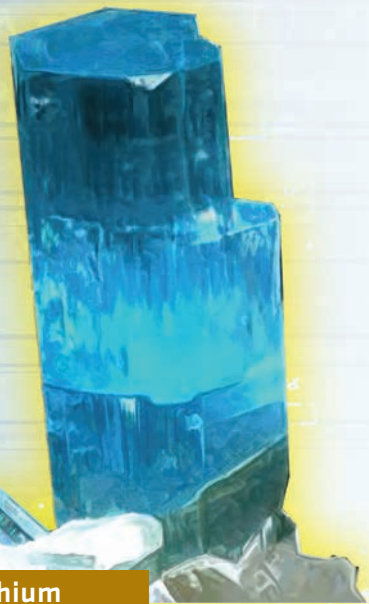
**Composition:** Unnatural composite of platinum, osmium and silicon  
**Color and luster:** Red and black; opalescence; streak grey  
**Hardness:** 6  
**Crystals:** None; usually massive spherical or mammillary masses  
**Other data:** Specific gravity 8; fracture conchoidal  
**Materials Properties:** Dual Natured, Imprisonment  
**Location:** It has been found in special hydrated silicate formations of both wood replacement and lava pockets. Known locations have been in Australia, Tír Tairngire, and CAS  
**Alloys:** Hepatizon (orichalcum and cerrukite), Psiloson (abyssitine and cerrokite)  
**Dual Natured:** Cerrukite is the mineral version of an astral barrier like awakened ivy. Barriers containing cerrukite can be destroyed in astral space using the same barrier combat rules (see p. 126, *Street Magic*)  
**Imprisonment:** Beings in physical contact with cerrukite are prevented from astrally projecting or returning to the astral plane or their home plane after manifesting. They must first break contact with the cerrukite before dematerializing or attempting to astrally project.

- I'm guessing the “unexplained” mana ebb in Tolanestéa is because of a large deposit of cerrukite.
- Lyran
- Mana ebbs can be caused by many things. It is too much to presume what sleeps in the crater.
- Man-of-Many-Names

## ELICHUM

Elichium appears as light blue quartz. Elichium has been found in significant concentrations in only Tír Tairngire and Tír na nÓg. This stone has a unique property influencing mana energies. In what is been called dia-metamagnetism, crystals with significant concentration of elichium repel magical energy. This can be seen in the bending of mana lines around crystallized elichium sources. Stone with elichium in high concentrations of magic will “levitate.” This is where the floating mountains of India gain their ability

Elichium can be dissolved in a pressurized acid solution. After the acid is neutralized, the elichium will precipitate out of the solution.



**Elichium**

Alchemists seed the super-saturated solutions of elichium to create large elichium crystals. Geomancers use these elichium crystals to redirect mana lines for their own purpose.

- Dia-metamagnetism? Who the hell comes up with this scientific mumbo jumbo?
- Slamm-O!
- Hermetics. Always defining some mystical ability to keep things nice and tidy in their books! Magic cannot be catalogued.
- Man-of-Many-Names
- Elichium crystals are a mean way to shank your neighbor and deny him access to a ley line.
- Lyrn

**CHARACTERISTICS**

**Composition:** Unnatural composite of praseodymium, fluoride and nickel

**Color and luster:** Pale blue to blue green, streaks white

**Hardness:** 5

**Crystals:** Isolean pyramidal crystal formation

**Other data:** Cleavage perfect 3 directions. Specific gravity 3.3

**Material Properties:** Dia-metamagnetic

**Location:** It has been found within leached mineral deposits and deep within cave systems, with known locations in the Arabian Caliphate, Indian Union, Tír Tairngire and Tír na nÓg.

**Alloys:** Corinthian bronze (elichium and orichalcum )

**ORICHALCUM**

Orichalcum is orange-gold in color and much like gold in texture. It's very pliable and can be beaten into thin sheets or shaped into thin threads. Technically it's an alchemedial alloy instead of a mineral, but scientific examination is difficult because spectroscopic analysis breaks orichalcum down into its component mundane metals. The sudden appearance of it in the earth shows how much we still have to understand of the Sixth World and leaves the possibility of it being



**Orichalcum**

a mineral up for debate. Orichalcum possesses many of the physical properties of gold, being dense and highly malleable. It alloys easily with iron, making it preferred for weapon focus construction. Aqua regia dissolves orichalcum, but the magical metal can be reclaimed. Natural orichalcum, when it existed, had many impurities from the composition of the rock in which it resided, even after being precipitated from aqua regia.

**CHARACTERISTICS**

**Composition:** Unnatural alloy of mercury, gold, silver and copper

**Color and luster:** Gold-orange; does not tarnish; metallic; streak gold-yellow, shiny

**Hardness:** 3

**Crystals:** Distorted grains, scales, lumps, and wires

**Other data:** Specific gravity 16.3; fracture hackly; ductile and malleable

**Material Properties:** Easily alloys with the other Awakened minerals

**Usage:** Manufacture of foci

**Location:** Various and unusual locations around the world during the high magical event in 2060 to 2061. Since then it ceased to exist as a minable mineral with one noted exception being Snowdonia in Wales.

**Alloys:** Ukkru (orichalcum, iron, and carbon), Corinthian bronze (orichalcum and elechium), hepatizon (orichalcum and cerrukite)

- Snowdonia orichalcum has some interesting properties including the crystal that the orichalcum was found in. I've heard that it can sense, even record, emotion of whoever possesses it.
- Winterhawk
- A mood crystal? Come on, what do you guys burn in those incense burners?
- Slamm-O!
- This from a man whose girlfriend can control machines with her mind.
- Mika



Wertamiline

## WERTAMILINE

Wertamiline crystals have a dark-green luster and possess gemstone quality. We are fortunate to be able to see this mineral in the formation of beryllium silicates, otherwise known as naga emeralds. Wertamiline within these gemstones plays with light and astral energies reflecting it into a prismatic spiral. Naga emeralds contain only trace amounts of wertamaline, eliminating it as a cost effective source of the mineral from the gemstone.

A few very secure and off limit stone columns of wertamaline and orichalcum called mel'thelem are the only known structures with high concentrations of wertamaline in the world. These artifacts are said to be able to store and sustain mana energy levels. Since the passing of the comet, and based on the theory of the mel'thelem properties, I have been able to find lesser concentrations of wertamaline reviewing astral energy fluctuation and geographically related areas where mana levels were slower to return to normal. I conclude that wertamaline is the rarest of all the Awakened minerals.

### CHARACTERISTICS

**Composition:** Unnatural combination of beryllium and yttrium chromate

**Color and luster:** Green

**Hardness:** 6

**Crystals:** Cleavage perfect 3 directions. Specific gravity 10

**Material Properties:** unknown

**Usage:** Currency for nagas in emeralds

**Location:** It has been found naturally in the Indian Union (naga territory) within the mineral content of emeralds.

**Alloys:** None known

## ULMENITE

Ulmenite is a chalky white mineral with a poor crystalline shape. It has been located deep within sedimentary rock, like limestone. Ulmenite was the first of the Awakened minerals found, as the stuff just glowed brilliantly, and not just at phosphorus luminous levels, but at over five hundred lumens in its raw, concentrated state (that's one-third the brightness of a standard CFL lightbulb). This light is a reaction to magic, much the same as glomoss. While ulmenite in its basic form has no practical use, alchemists have found that threads of tungsten passed through powdered ulmenite in a special process, transforms those threads into an alloy called ithium. Ulmenite has



Ulmenite

been found in deep cavernous systems and in thin layers on the banks of the Grand Canyon.

### CHARACTERISTICS

**Composition:** Unnatural composition of calcium, cadmium and silver.

**Color and luster:** White or grayish white; pearly on cleavage; streak colorless.

**Hardness:** 3

**Crystals:** None

**Other data:** Cleavage poor, one direction; Earthy; specific gravity 2

**Material Properties:** Manaphotaic

**Location:** Known locations include Amazonia, PCC, and Taklamakan

**Alloys:** Ithium (ulmenite and tungsten)

**Manaphotaic:** Ulmenite will glow in the presence of active magical energy such as active foci, sustained spells, wards, or rituals. The distance at which ulmenite will start to glow is a distance of (Force of item/spell/ward - 6) meters (minimum 1) from magical object.

## ALLOYS

**Corinthian Bronze** (orichalcum and elichium): Also called Corinthian brass, this is a highly polished material with the same basic properties of orichalcum. Partial translations have been made from the Syriac "Zosimus" Manuscript in the alchemidial creation of Corinthian bronze. Corinthian bronze can reflect spells that target the welder of the alloy.

**Material Properties:** Dual natured, Reflective



Corinthian Bronze

## HIGH-TECH RESOURCE WAR

### Posted by: Rockhound

I'd like to set the clock back to just before the Sixth World for a second to provide some geological information that people might not be aware of that is important. The Great Resource Rush was mostly seen to the public as the strip mining of iron, gold, and coal, or drilling for oil, i.e., the more commonly needed resources. For the most part, this is true, but behind all that, however, was a hidden resource war. You see the high-tech companies were thinking about "rare earth" elements that they started using during the late 1970s in the building of technological devices. While called rare earths, they are still two hundred times more abundant than gold, it's just that they are not in any great concentration to be mined cost effectively. There are fifteen rare earth elements with almost fifty percent of the deposits located in what is the shattered nation of China, followed by the United States at thirteen percent. Russia, Australia, India, and Canada also contain a significant but smaller percentage of these deposits. Those places with accessible assets became embroiled in espionage and hostile activities. One example location is Mountain Pass in CFS, where they mine primarily dysprosium, which is used in lasers, nuclear plants, and hard drives.

- Hard drives: Magnetic storage devices for data.
- Bull
- Thanks Mr. Aetherpedia. Are your programs on a hard drive or have you not converted up from punch cards?
- Slamm-O!
- Smartass.
- Bull
- Your typical cybernetic limb contains a few grams total of neodymium, ytterbium, and cerium if scrapped and extracted. Still profitable as a raw material in several black markets, provided you're wise/tough enough to survive an audience with them.
- Nephrine

Before the breakup of the United States, the mine changed hands four times in the span of a dozen years. One CEO died, then there were various minor scandals and two hostile takeovers of various corps in Mountain Pass. Even after the secession of the CFS, Mountain Pass remained fiercely guarded.

- Probably why other countries were able to nibble away at the north and south.
- Snopes
- Or that Mountain Pass is in the Mojave Desert and PCC is having a hard enough time with the parts of the desert they got.
- Sunshine
- Everything has a price, including government concessions.
- Kay St. Irregular

When the UCAS formed, there were border disputes with other nations. After some negotiations, the UCAS ended up with a few choice deposits of the rare earths

unbeknownst to the other nations who only desired independence. Thor Lake was one of them. Similar redistributions of power occurred around the world with corporations.

- Yeah, but they missed getting Bear Lodge from the Sioux. Who knew that Devil's Tower would magically grow another eighty meters and become the focal point for shamanic rituals? These people are literally sitting on a gold mine of six rare earth elements.
- The Smiling Bandit

Today several corporations have a significant percentage of rare earth minerals deposits to ensure they have sufficient supplies for their manufacturing needs. Cyberware and technical components became cheaper due to the use of rare earth elements in micro assembly as well as breakthroughs like graphene. While computers are mostly optical, it still takes the element erbium to make the optical components as good as they are.

Zeta-ImpChem, through its subsidiary Kazkhron, and Monobe have continued to battle over rare earth deposits in China. Neither of them have been able to establish superiority. Sabotage and theft of ore occurs frequently. Yamatetsu, through Sokolov-Sarbai, has thrown their hat in the ring, pushing into Asia after failing to economically extract such resources with aquatic mining.

- There are many reasons why China broke up the way it did. My preferred rumor is that corporations had a hand in the breakup. This just gives another justification, in that it was a corporate conspiracy to prevent the government from having a monopoly over resources for their technologies.
- Plan 9
- Regardless, if you want a lucrative smuggling run, try Baotou in Mongolia. A kilo of any rare element can fetch over a grand in Hong Kong's black market. There are regular runs out of that whole area to feed the knock-off tech factories.
- Ma'Fan

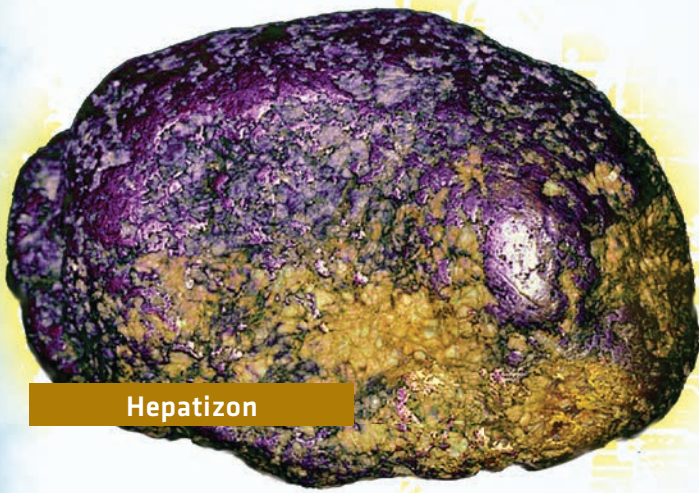
Saeder-Krupp has the biggest stockpile of proven rare earth reserves through Kinesys Heavy Industries, though they still face competition with Tanamyre Resources for several of Australia's mines.

- Control is tenuous at times, with several sites being affected by mana storms. This leaves windows for other groups to swoop in to do a little independent work.
- Black Mamba

MCT, Aztechnologies, Evo, and Shiawase also have small amounts of rare earths stockpiled as they have been extracting the elements from aquatic mining sites in the Pacific.

- Don't believe that just because tech is cheap, things are peaceful. It's relatively stable at this point, but there's a global cold war over these resources, and it would take just a few minor incidents like an embargo on one of these minerals to heat it up.
- Kay St. Irregular





**Hepatizon**

**Hepatizon** (orichalcum and cerrukite): In an alchemical process, Cerrukite can be heated in a crucible with orichalcium to form the alloy, hepatizon and a silicon byproduct. Hepatizon has the same physical properties as orichalcium only with a dark purplish patina similar to the color of liver. It's also one of the only metals that is dual natured.

**Material Properties:** Dual natured



**Psilosin**

- Corporations like Horizon would kill for this stuff. Think about how they can chain a spirit and do some of the research they started in the Mojave.
- Elijah
- How would the mage get the spirit to do his bidding without services?
- Mika
- Through intimidation and torture, what else?
- Kane

- Apparently chains of this stuff were found at an archeological dig in the Tunguska region.
- Plan 9

- I can only confirm that the dig discovered some metal tools predating the accepted timeframe of known metallurgy in the area. Nothing magical like an Alchera has been discovered.
- Elijah

**Ukkru** (orichalcum, iron, and carbon): Ukkru is the more obscure name of the orichalcum alloy used to make weapon foci. Orichalcum would be too soft of a metal to use in, for example, a sword. It takes a special smelting process to merge orichalcum and iron together and to imbue the weapon into a focus.



**Ithium**

**Ithium** (ulmenite and tungsten): This silver colored alloy illuminates in the presence of mana energy; the stronger the magic, the brighter the light.

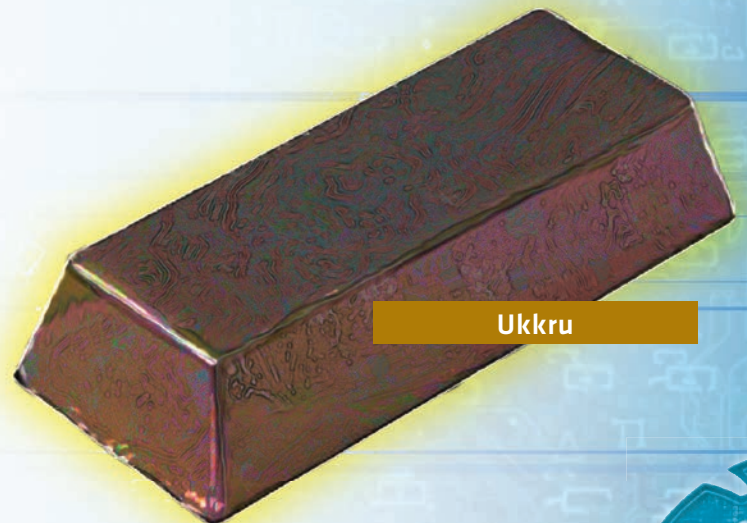
**Material Properties:** Manaphotiaic

**Note:** Ithium is more sensitive than ulmenite; ithium will start to glow is a distance of (Force of item/spell/ward - 2) meters (minimum 1) from magical object.

- It's just like glomoss only you don't have to water it.
- Lyran

**Psilosin** (abyssitine and cerrokite): By alchemical means, abyssitine can be combined to cerrokite with a calcium-osmosium byproduct to create a more pliable material called psilosin. Psilosin has been found to bind manifested beings to this material plane and prevents them from leaving to their own metaplane. Like cerrokite, psilosin doesn't allow astral projects, but it also recalls and binds a physical entity to its astral counterpart.

**Material Properties:** Absorption, Dual Natured, Imprisonment



**Ukkru**



## GAME RULES

All the Awakened minerals and alloys in this book are powerful tools. Gamemasters should consider the effects of game play if they add them to the game.

**Reflective:** Similar to the metatmagical reflecting (p. 61, *Street Magic*), items created with Corinthian bronze reflect back a portion of the spell used against them. Active foci created with Corinthian bronze would roll their Force (minimum 2 dice) to determine the Force of the spell reflected back, inactive foci and the raw alloy would only roll 2 dice to determine the Force of the spell reflected.

## GEOMANCY AND GEOMASONRY

Parageologists usually fall into one of two groups in their magical practices: geomancers and geomasons. They are two sides of the same coin in the manipulation and control of mana lines. This is a similar division like that of hermetic and shamanic magic.

Geomancy relates to an intuitive view of flowing energies and usually falls into the schooling of feng shui and the books *Kao Gong Ji* and *Lu Ban Jing*, which instruct construction to maximize qi energy. Geomancy has been around for over six thousand years with fundamental symbolism predating both feng shui and the *I Ching*. As a side note, this has fueled theories of an advanced culture, much like the Atlanteans, who passed on this knowledge in the East.

Geomasonry relates to logic and freemasonic construction to resonate with extraplanar energies. Geomasonry has many roots, and is as old as geomancy. The Pyramids of Egypt and structures in Amazonia for example are early evidence of ancient geomasonry. This has added fuel to the theory of an expansive Atlantean civilization and the Atlantean Foundation's study of geomasonry.

To give you an example of some of the work that each of the groups do, here are two places that I've been to.

- Here's how you distinguish geomancy from geomasonry. The only tool that geomancers use is the *luo pan* or compass to survey where to build. The rest is done using the books as a guideline, following aesthetics and the designer's gut instincts. This is probably the reason it takes so long, as they tinker with the design and have more organic material that takes time to grow. Geomasons could have probably built four towers in the time that Wuxing took to build two.
- Elijah
- I'd disagree. There's much time and effort that geomasons take in doing calculations and measurements done before the placement of each block that it would add up to probably the same amount of time. I'd go for a geomancer-built house over a geomasonic-built house any day as geomasonic buildings are too spartan and feel like a tomb.
- Arete

## WUXING SKYTOWERS

These towers were specifically designed and constructed using every known geomancy and feng shui technique to maximize the magical energies that enter the building through the nexus on which the towers were built. The first tower is known to hold the Dragon of Wind and Fire, an artifact willed to Wuxing by Dunkelzhan. It sits in the center of the temple at the top of the tower. The combination of architecture and the artifact draws the mana lines up the tower, through the artifact, and then has it manifest in an astral shallow.

## DEECEE DILEMMA

### Posted by: Magister

It is true that Freemasons use geomasonic techniques in their construction of buildings. It's the same with other groups using the *I Ching* and principles of feng shui. They probably never would have guessed at some of the real intent of the architecture. It would be like if the Greeks had build circuit boards for the aesthetics. Imagine their surprise when obelisks like the Washington Monument and Pilgrim Monument turned out to function as crude mana prisms, attracting mana lines and bending them at odd angles. Pilgrim Monument sends the mana line almost back on itself at 160 degrees.

There are similar architectural follies around the world as people seemed to know just enough to be dangerous with various mana control techniques. DeeCee is one of the worst places for mana flow, with the mana lines twisted and pulled all over the city, even backtracking. I'm surprised that the rift didn't swallow the whole town with all the chaotic magical energy. Worse still, no one can afford the effort to restructure so many stone buildings,

- San Francisco is in the same boat with an "accidental feng shui" competition in Chinatown. Geomancer "repairmen" can make some cred, similar to a plumber working on aging pipes.
- Man-of-Many-Names

There are only three locations where more than two mana lines cross in Hong Kong: Po Lin Monastery on Lantau Island, the Wong Tai Sin temple in Kowloon City, and the first Wuxing tower at Aberdeen. Normally the crossing of these mana lines would not produce an astral shallow in the first tower because they aren't very powerful lines, so it's assumed that either an artifact or the design of the building is amplifying the mana lines or concentrating the ambient mana energy into the nexus to trigger it. With the construction of the second tower, we see the manifestation of a tertiary mana line connecting the two. This is more likely the ability of the artifact.

The second tower, unless they figured out how to replicate the artifact, is likely a mana conflux. With the additional energy from the first skytower, it too manifested astral shallows. The mana lines they built upon are Type D lines that intersect with the great Ring of Fire. It is possible they are building a scaffolding or bridge for better manipulation of the ring.

- Manipulation is pretty close to control. I think most groups are waiting to see when or if a third tower is built, and is it connected to the Ring as well. Wuxing will have Ryumyo and Lung all over their territory if this happens. We already heard about the temporary sabotage that happened to the first tower's feng shui. I say "temporary" because the bad luck they've been having seems to not occur as frequently.
- Winterhawk

## KARLSRUHE

Karlsruhe is a quaint, overlooked town with fantastic architecture and culture. It also has a well-regarded school for Matrix and technology education. The downside to the place is the lockdown on the media. It was not hard to notice the behavior of my colleagues while I was down there with a Dunkelzahn Institute of Magical Research group. They were nervous to say anything other than the weather/food with the Faustians monitoring the media. It's not a bad place overall, and they keep redesigning the decor in the heart of the city, though

no one really has the final overall plan. I know there's something going on when there are three obvious geomasonic structures in the city: The pyramid burial tomb of the city's founder at the northern tip of a large isosceles triangle, the wheel with thirty-two radiating, fan-like streets and the octagonal castle tower at the center of the wheel. Oddly enough, though, not one of the groups here, including my own, is actively pursuing them for study. Another puzzle is the presence of Dr. Makram Zharan, who has come down to look over a part of the KIT school for a project. I can't even get in to see him for five minutes without a bunch of military thugs denying my request to enter the college; especially when they noticed my credentials as a parageologist. Not that my ego believes me to be important, but I've usually been able to get a lunch or drinks with any corporate colleague of magical studies.

The things that I know or have discovered are very few. My job at Karlsruhe with DIMR was to chart and classify the various power sites around AGS using the Metzger-Typhus scale for mana levels. My first roadblock working from Karlsruhe was that on many occasions, the spirits were, I would say, unreliable in respect to tasks or information I've requested pertaining to the general area of Karlsruhe. I later identified that my problem was that the Institut für astrale Erkundung und Sicherung (IAES) (Institute for Astral Reconnaissance and Protection) were working with the Faustians here. I had experienced one of the changes to the city when the little soy-café shop near the DIMR building went from "Jugendstil" architectural style to an all-marble front with columns and everything overnight. The owner would only say it was part of the tourism upgrade; like I'd believe that load of drek. I didn't need a laser rangefinder to tell me it screams "Freemason." Finally after completing my research, I came to the conclusion that there were no mana lines connecting along the streets that appear to be designed for such things, nor were there power sites close to the city. Personally, though, I feel there's potential, like a power site hasn't Awakened yet and needs some spark to activate it. I hit too many

roadblocks in poking around the city, and that may be because Dr. Zharan is doing the same thing, only at an authorized level.

- It's rumored that the eruption of the Auvergne volcanoes was accidental, as someone was redirecting the mana line.
- Plan 9

## GEOMANCY/GEOMASONIC CONSTRUCTS

The magical constructs created by geomancers and geomasons are much like shamanic lodges and hermetic circles. One could say that all of these ancient rituals have common arcane roots. Like lodges and circles, these are immobile, permanent architectural features built into a building. The designs are quite common, even in modern and postmodern architecture. So it's not unheard of to see functional and non-functional geomantic works within a building. Functional geomantic works are rare due to the expense and the requirements that had to be met. It takes time to properly build the constructs and attune them to the energies of the mana line; one mistake and you can have the same issues plaguing DeeCee and San Francisco. To give you some insight on some magical architecture, I'll name a few.

### Arcane Cheval

An arcane cheval is designed for the redirection or bending of a mana line. The most common structure of an arcane cheval is that of an obelisk for geomasons. Geomancers, however, find it a crime to force a change to mana lines; though they know that the use of natural reflective surfaces, such as a body of water, polished metal, or a mirror, in architecture can be attuned to alter its flow. They are built to bend only one mana line, so occasionally constructs are combined within a building to further manipulate one or more mana lines. If more than one mana line is directed at an arcane cheval, they do not intersect within the cheval to form a nexus, and the direction in which the other mana lines are reflected can't be predicted, as the cheval is never designed for multiple inputs. Like all these constructs, they are built to a specific energy level. If the mana line is greater than the construct can handle, then there is the potential the construct can fail. Failure of a construct would mean damage and destruction to the architecture of the building, possibly including the collapse of the building/monument itself.

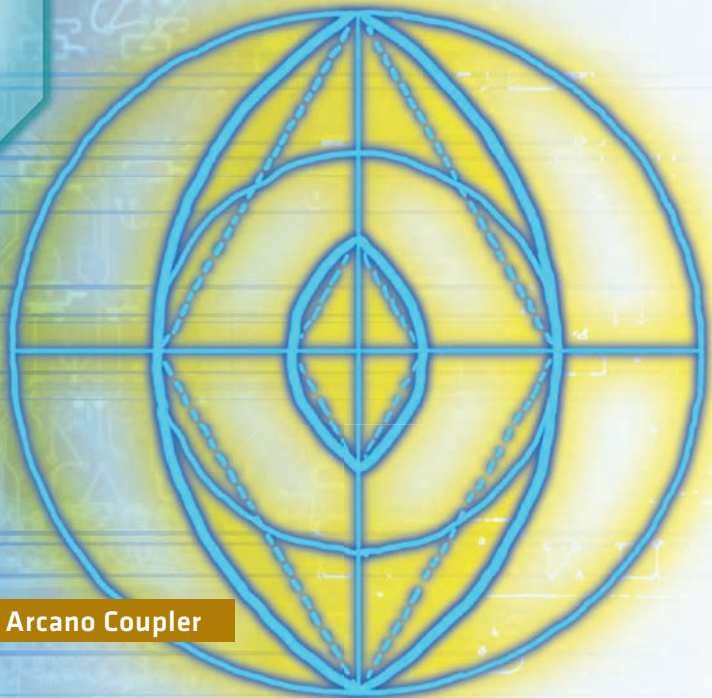
An active arcane cheval can build up a background count, like turbulence in a stream. The background count then acts like an attractor to mana lines at close proximity, usually somewhere between two and five hundred meters. Since not all arcane chevalls generate a background count, it may be due to discrepancies in the ritual's design.

### Arcano Coupler

An arcano coupler can work similar to the arcane cheval, as it redirects a mana line. If it is built on a nexus, it will take the two intersecting mana lines and convert its output into a single mana line. The design of an arcano coupler is usually around the vesica piscis shape. Geomasons would design vaulted ceilings with this shape, where each arch directs the entrance and exit of a mana line and the center housing the nexus. Geomancers would weave paths through a landscape in a "Y" shape that intersects within a vesica piscis. This shape has many mystical purposes, and smaller-scale versions have been noted in magical seals on doors. The strength of the arcano coupler has to



Arcane Cheval



Arcano Coupler

be equal to or greater than the power of the nexus. The first Wuxing skytower and possibly the second have been designed with the vesica piscis framework built within the upper floors.

### Mana Conflux

Mana Conflux is an artificial power site that can be built connecting a divergent mana line, preventing the line from traveling further. The size of the mana conflux has to be as powerful as the force of the mana line it connects. For every mana prism or arcane cheval, there should be a mana conflux constructed to “catch” this mana energy, as stray mana lines can have unintended consequences. A ring of stones or windowless structure with only one entrance facing the mana line is the general appearance of a mana conflux, with either the floor or ceiling inscribed with symbols that allow the conflux to mimic a power site.

If a mana surge, Shen effect, or that the mana line is of greater force than the mana conflux, it will slowly degrade in strength and eventually collapse and become non functional while there is a difference in force. A Mana Conflux can handle more than one mana line if the mana conflux’s strength is greater than the nexus the mana line creates and intersects the same entrance.



Mana Conflux



Mana Prism

### Mana Prism

A mana prism allows a small amount of power from a mana line to be diverted into a new mana line. The power of the new mana line is half that of the original mana line, and the original mana line is reduced in power slightly. Mana prism structure varies. Geomasons would have some monument carved with the prominent “all-seeing eye” that faces the direction of the new mana line. Geomancers could have a temple guardian carved to redirect the flow of a portion of the mana line. This is similar to gothic gargoyles, with the prism controlling the flow of energy instead of water. There are examples of gargoyles built specifically for this purpose.

### GAME RULES

Once a mana line is diverted, its Force is not reduced further with more divergent mana lines. However, there is a limit to the number of mana prisms that can be used to divert mana, which is equal to the original force of the line - 1. Divergent mana lines can be further split by mana prisms using the same rules. A mana prism can't split a Force 1 mana line.

### Example:

*A Force 6 mana line is reduced to Force 5, with 5 possible divergent lines at Force 3. Each of these divergent mana lines can be split again, reducing their Force to 2 with 2 possible divergent lines at Force 1.*



Arcane Window

**Arcane Window**

An arcane window is the permanent construction of an astral shallow, allowing anyone to peer into the astral plane. The window is a complete shape to encase the energies that form the astral shallow. Both geomasons and geomancers prepare glass pieces for the window. The window always has a solid frame, though the styles can vary; from gothic stained glass windows to feng shui modern glass office separators. Arcane windows are the most fragile constructs. While the glass can be broken, it's only the medium for the magic within the structure. The breaking of the frame destroys the arcane window completely.

- Wuxing towers have "transparent walls" for their security guards to observe from their posts.
- Mika

**Arcane Gateway**

An arcane gateway is the permanent construction of an astral gate, allowing someone, after performing a ritual, to cross over to a metaplane. Geomasons design these gateways as false doors or narrow alcoves, while geomancers would design an archway of woven branches or inscribe incantations within a magic mirror. In either case, the room containing such constructs would be where the ritual would be held to open the gate and be secure enough to leave corporeal bodies behind.

- Whispers still come out from time to time of locked doors to impossibly dark places worshipped by unnamed cults.
- Man-of-Many-Names



Arcane Gateway



# GAME RULES

## MANA LINES

These rules are guidelines for a gamemaster to incorporate mana lines into their game:

### Mana Lines General

Mana lines have a Force Rating from 1 to 7. Mana line power is defined as an order of magnitude, so that it takes two mana lines of equal power connecting to increase the power along both to the next greater rank in magnitude. They cannot be blocked by barriers nor can they be moved except by geomantic/geomasonic magical constructs. Astral shallows can form along a mana line if it has a Force greater than 4, or it can form at a nexus of more than two mana lines. Domain area of a mana line is twice the Force of the mana line x 10 meters radius around the mana line.

The length of a mana line varies. Usually there are “power points” with a connecting mana line. With no obvious end point, a mana line can end abruptly at a distance of its Force + 1 in kilometers.

### Type D Potential Effects

There can be a noticeable effect of precipitation, weather, or temperature within the domain of a Type D mana line. *Example: The Harding Icefield has an increased growth of ice in its domain.*

### Type L Potential Effects

Influences the general mood of the surrounding population. This is usually less noticeable because of the number of people and/or a conflicting background count. *Example: People may feel slightly happier, but that is offset by the misery of poverty and pollution common in the Sixth World.*

### Type S potential effects

Mana storms commonly form along Type S mana lines, especially when there is a fluctuation in mana levels along the line. Astral gates can form along a Type S line, though less frequently. Some of these types of mana lines are designed for a particular metaplane, though mana storms can cause a random astral gate to form. Physical movement rate along a mana line can increase or decrease relative to the Force of the mana line.

### Sha Event

This is the same as mana ebb (p. 120, *Street Magic*) localized to a mana line. This usually brings out the negative aspect of mana lines. For example, plants grow poorly, potential toxic critters develop, people nearby experience bad luck, etc. In some instances, the gamemaster can use the Force of the mana line as a dice pool modifier to represent unnatural difficulties in accomplishing tasks near the line.

### Sheng Event

This is the same as a mana surge (p. 122, *Street Magic*) localized to a mana line. It can bring out the positive aspect of mana lines. One unique property of a shen effect is the increased chance of changling mutations while within a mana line. The gamemaster can use the Force of the mana line as a dice pool modifier to represent inspiration in accomplishing tasks (for example, Knowledge Skill Tests or tests involving Intuition).

## ADDITIONAL GEOMANCY/GEOMASONRY RULE CLARIFICATION

The length of a mana line that can be aspected is equal to the caster's Magic Rating x 10 in meters with the width of the domain being the same as the mana line. If there is an overlap of domains during the ritual spellcasting to aspect the line (Geomancy, p. 56, *Street Magic*), it becomes an Opposed Ritual Test. The mage who has already established the domain gains additional dice in this contest equal to the power of the mana line. Whoever gets more successes gains or continues to control their aspected portion of the mana line. The defeated mage suffers Drain equal to the net successes of the winner. This is in addition to the Drain from casting the ritual; the combined total Drain may be resisted as usual with a single Drain Resistance Test.

### True Element Abilities

In the creation of a foci or fetish, one of the true elements can be added. Only the primal radical reagent based on that true element can be added. One of the traits listed below can be added to the foci/fetish for each unit of true element used, to a maximum of two units. Each unit of a true element is to be considered in the total Force of all bonded foci limitations (p. 199, *SR4A*):

- +2 dice in the summoning of a spirit of that element, -2 dice in the summoning of any other type of spirit.
- -2 to the threshold of spells cast in the manipulation of that element, +2 to the threshold of other elements (affected spells include Shape [element], Cleanse [element], etc.).
- The area of effect of a spell using that element can be considered at a Force 1 higher than actually cast. All other spells with a different elemental effect have their area reduced by 1. The actual damage and force of the spell remains unaffected (affected spells include Ball [element], Cleanse [element], etc.).
- The foci/fetish can manifest the element at will as an effect (p. 164, *Street Magic*). This element effect can't injure the person to whom it's bonded. The material generated lasts for an hour.

## Primal Radical Reagent Abilities

In the creation of a foci or fetish, one primal reagent can be used in its construction. The primal reagent cannot conflict with any true element used in the creation of the foci/fetish. Each reagent is to be considered in the total Force of all bonded foci limitations (p. 199, *SR4A*) in addition to the cost of 1 Karma point in the creation of the radical reagent.

- The foci/fetish cannot be bonded to any caster other than the subject whose Karma was used in the creation of the reagent.
- The foci/fetish makes a poor link in ritual sorcery (p. 184, *SR4A*). Apply a  $-4$  dice pool modifier in any spell cast using ritual sorcery and with this device as a link.
- For magic cast through foci/fetish against targets behind a mana barrier (p. 194, *SR4A*), reduce the Force of the barrier by 2 before adding it to the target's resistance dice pool (Primal Forged reagents only).

### PRICES AND AVAILABILITY

Name	Availability	Price (per unit)
------	--------------	------------------

#### Awakened Minerals

Abyssitine	36	3,500,000 ¥
Cerrukite	30	2,500,000 ¥
Elichium	30	1,500,000 ¥
Orichalcum	12	50,000 ¥
Ulmenite	30	1,500,000 ¥
Wertamiline	36	3,500,000 ¥

#### Magical Alloys

Corinthian bronze	30	2,500,000 ¥
Hepatitis	30	2,500,000 ¥
Ithium	30	2,500,000 ¥
Psilosin	36	4,000,000 ¥
Ukkru	14	75,000 ¥

#### True Elements

Air (Longfeng)	30	1,500,000 ¥
Earth (Longpi)	30	1,500,000 ¥
Fire (Longqi)	30	1,500,000 ¥
Water (Longlei)	30	1,500,000 ¥
Primal stone	24*	750,000 ¥
Primal breath	24*	750,000 ¥
Primal forged metals	24*	750,000 ¥

\*Note that each of these also has an additional cost of one Karma per unit.

## ADVANCED METAMAGICS

### Home Advantage

**Prerequisite:** Geomancy/Geomasonry

The Geomancer initiate can, through an aspected mana line, have in-depth knowledge of the land the mana line traverses. Size of the land they know about is initiate grade in square kilometers, with a maximum of the mana line's power level. Add dice equal to the power of the mana line to Perception, Tracking, and Local Knowledge tests when within this domain. The aspected mana line must be one that the geomancer has imprinted with his own style of magic (p. 56, *Street Magic*).

### Patronage

**Prerequisite:** Geomancy/Geomasonry

The Geomancer initiate can, through an aspected mana line, have an extra aura about them that can influence those living and working in the area the mana line goes traverses. Size is initiate grade in square kilometers, with a maximum of the mana line's power. Add dice equal to the power of the mana line to Charisma-based tests when within this domain. The aspected mana line must be one that they geomancer has imprinted with his own style of magic (p. 56, *Street Magic*).

## GEOMANCY RITUALS

These are rituals only available only to those who initiate in geomancy. They have the same cost to learn as spells. These rituals have a range of line of influence (see below) and must be performed while the caster is present on a mana line.

### Line of Influence (LOI)

The line of influence is a finite area around a mana line based on the power of the mana line and the size of the domain. The area equals Force of the line x 100 meters. A geomancer can target anyone within this area.

### Geopathic Connection

**Prerequisite:** Geomancy/Geomason, Home Advantage

**Type:** M • **Range:** LOI • **Damage:** P • **Duration:** I • **DV:** (F ÷ 2) + 2

Using this ritual, the geomancer can control the mundane land within the domain of the aspected mana line. Geopathic connection allows the ritual caster to cause mishaps to a subject; however the ritual caster must have sight of the subject either personally, through a spotter or using ley sight. Geopathic Connection allows the ritual caster to temporarily use the Accident power (p. 208, *Running Wild*). The gamemaster should base the nature of the accident on the circumstances and environment. The maximum number of successes the ritual can achieve is Force of the aspected mana line + 1.

### Ley Sight

**Prerequisite:** Geomancy/Geomasonry

**Type:** M • **Range:** LOI • **Damage:** NA • **Duration:** S • **DV:** (F ÷ 2) + 1

The caster, through this ritual, is able to see or hear from any point within the aspected domain of the mana line with the exception of areas blocked by mana barriers. Augmented vision or hearing doesn't apply. Maximum number of successes the ritual can achieve is force of the aspected mana line + 1.

### Manifest Sha

**Prerequisite:** Geomancy/Geomasonry and Cleansing

**Type:** M • **Range:** LOI • **Damage:** NA • **Duration:** I • **DV:**  $(F \div 2) + 4$

Casting this ritual can temporarily disrupt the power of a mana line and introduce bad luck with a sha (p. 4). This is an Opposed Test of Ritual Spellcasting + Magic vs. the Force of the mana line. If the sha is being introduced on a line that has been aspected by a geomancer, add the highest Magic Rating of the geomancer who aspected the line to the test (if more than one geomancer was involved, use the highest Magic Rating of those who participated). Net successes can be divided between the ebb effect and duration. Every success for the effect reduces the Force of the mana line by 1. Every success added to the duration allows the sha to last for an additional week. The aspecting geomancer/geomason will not know of the sha effect.

If the mana line is reduced to 0, the length of the mana line that is reduced to 0 is the same as if the person aspected the line him or herself (see additional geomancer rules, p. 26). The Force of the mana line goes up by 1 on either end of the mana ebb at stages equal to the length of the area reduced to 0 until it reaches its true Force. This is known as a sha cascade effect.

### Yang Zhai

**Prerequisite:** Geomancy/Geomason, Patronage

**Type:** M • **Range:** LOI • **Damage:** NA • **Duration:** S • **DV:**  $(F \div 2) + 2$

Using this ritual, the geomancer can project his will to influence those living and working in the area that the mana line goes through. If the geomancer doesn't like someone, those people will also have a tendency to be more hostile to the subject. The mage uses ritual spellcasting (p. 184, *SR4A*) versus the Willpower of affected individuals. The effect of this ritual is the same as Mob Mood (p. 210, *SR4A*), but it only affects those who work/live inside the domain of the aspected mana line. Maximum number of successes the ritual can achieve is Force of the aspected mana line + 2.